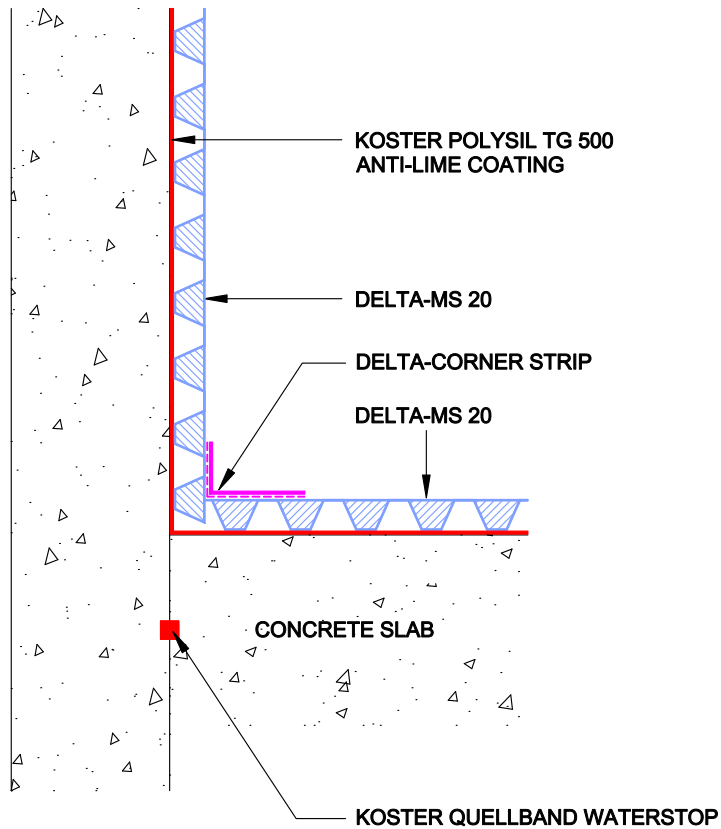
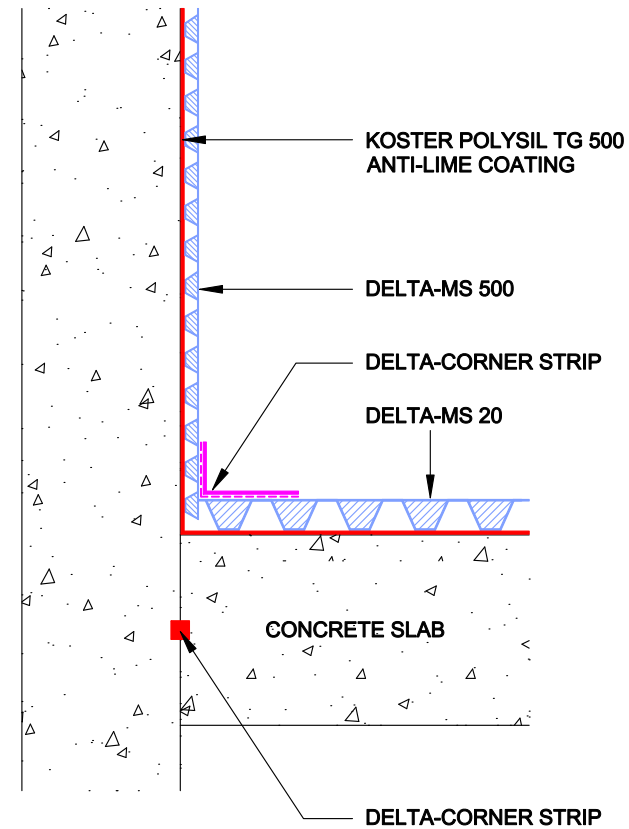


**WALL/FLOOR JOINT BETWEEN DELTA-MS 20  
USING DELTA-CORNER STRIP TO FORM  
FLEXIBLE WATERPROOF JOINT**



**JOINT DETAIL BETWEEN DELTA-MS 20 & MS 500  
USING DELTA-CORNER STRIP TO FORM  
FLEXIBLE WATERPROOF JOINT**



**DELTA** MEMBRANE SYSTEMS LTD.

DRAWING No: DW-117-1- (F)  
DRAWING TITLE: MS20 / MS20 & MS20 / MS500 JOINT DETAILINGS

DELTA HOUSE, MERLIN WAY, NORTH WEALD, EPPING, ESSEX CM16 6HR  
TEL: 01992 523523 FAX: 01992 523250

OFFICE USE:  
REVISION No: 1  
REVISION DATE: June 2017  
Drawn By:  
Checked By:  
Scale:  
System Files: PDF / DWG

DRAWING NOTE:  
This drawing is for illustrative purposes only. Drawing not to scale.

PROJECT / COMMENTS:

DRAWING NOTES:  
All installations to be carried out in strict accordance with manufacturer's installations instructions.  
For further assistance contact Delta Technical on 01992 523 523 or email technical@deltamembranes.com