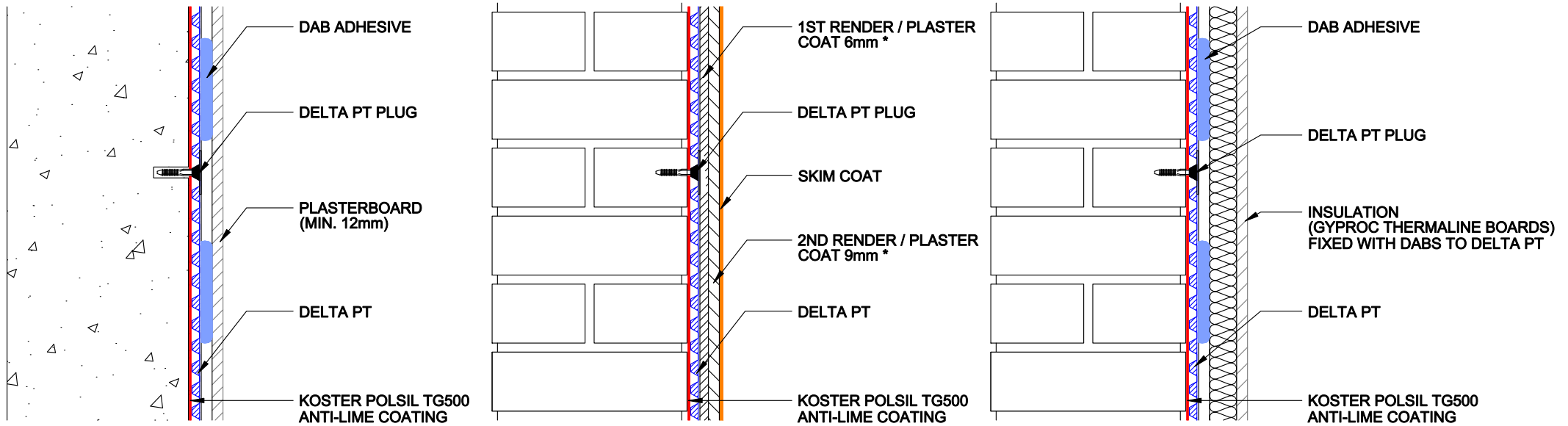


DELTA PT - WALL FINISH OPTIONS



* RENDER: 1:1:6 CEMENT: LIME: SAND
 PLASTER: TARMAC WHITEWALL
 (FOR OTHER PROPRIETARY PLASTERS PLEASE CONTACT DELTA TECHNICAL)

DELTA MEMBRANE SYSTEMS LTD.

DRAWING No: DW-149-1-(C)
 DRAWING TITLE: DELTA PT - WALL FINISH OPTIONS

DELTA HOUSE, MERLIN WAY, NORTH WEALD, EPPING, ESSEX CM16 6HR
 TEL: 01992 523523 FAX: 01992 523250

| | |
|-----------------------------|-----------------------------------|
| OFFICE USE: | |
| REVISION No: 1 | Drawn By: Checked By: |
| REVISION DATE: June 2017 | Scale: System Files: PDF / DWG |

DRAWING NOTE:
 This drawing is for illustrative purposes only. Drawing not to scale.

PROJECT / COMMENTS:

DRAWING NOTES:
 All installations to be carried out in strict accordance with manufacturer's installations instructions.
 For further assistance contact Delta Technical on 01992 523 523 or email technical@deltamembranes.com