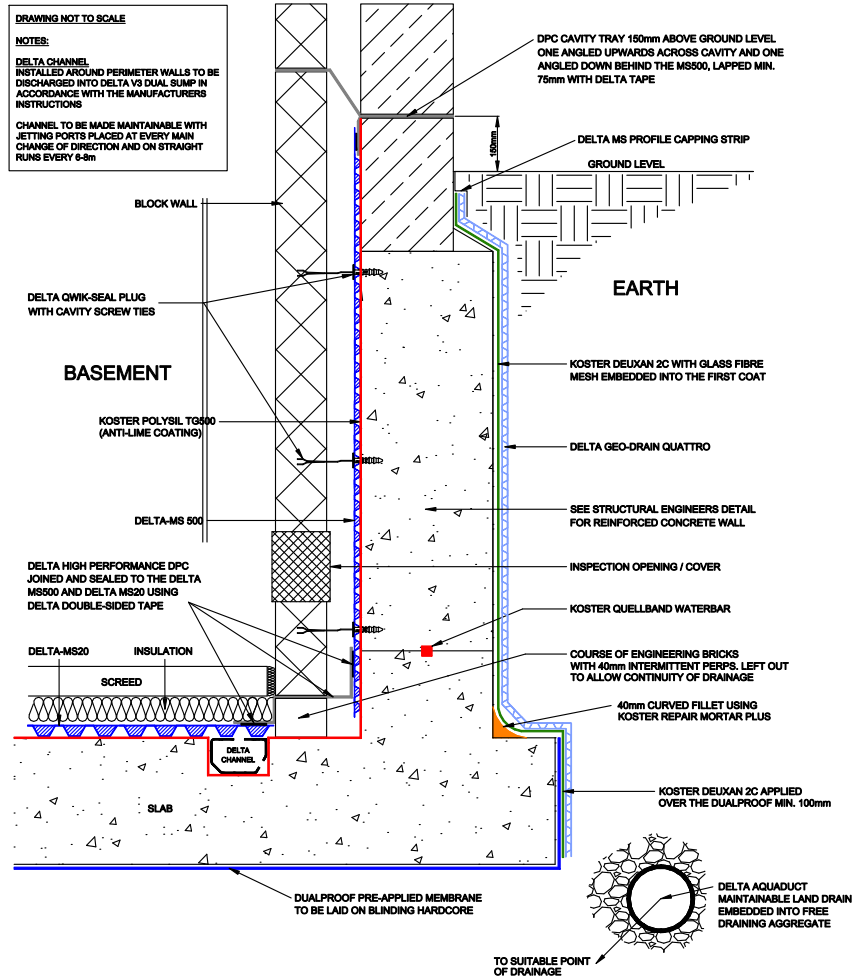


COMBINED SYSTEM - (RECESSED PERIMETER CHANNEL OPTION)



DELTA MEMBRANE SYSTEMS LTD.

DRAWING No: DW-205-1- (D)
DRAWING TITLE: COMBINED SYSTEM - CHANNEL RECESS

DELTA HOUSE, MERLIN WAY, NORTH WEALD, EPPING, ESSEX CM16 6HR
TEL: 01992 523523 FAX: 01992 523250

OFFICE USE:	
REVISION No:	Drawn By:
1	Checked By:
REVISION DATE:	Scale:
June 2017	System Files: PDF / DWG

DRAWING NOTE:
 This drawing is for illustrative purposes only. Drawing not to scale.

PROJECT / COMMENTS:

DRAWING NOTES:
 All installations to be carried out in strict accordance with manufacturer's installations instructions.
 For further assistance contact Delta Technical on 01992 523 523 or email technical@deltamembranes.com