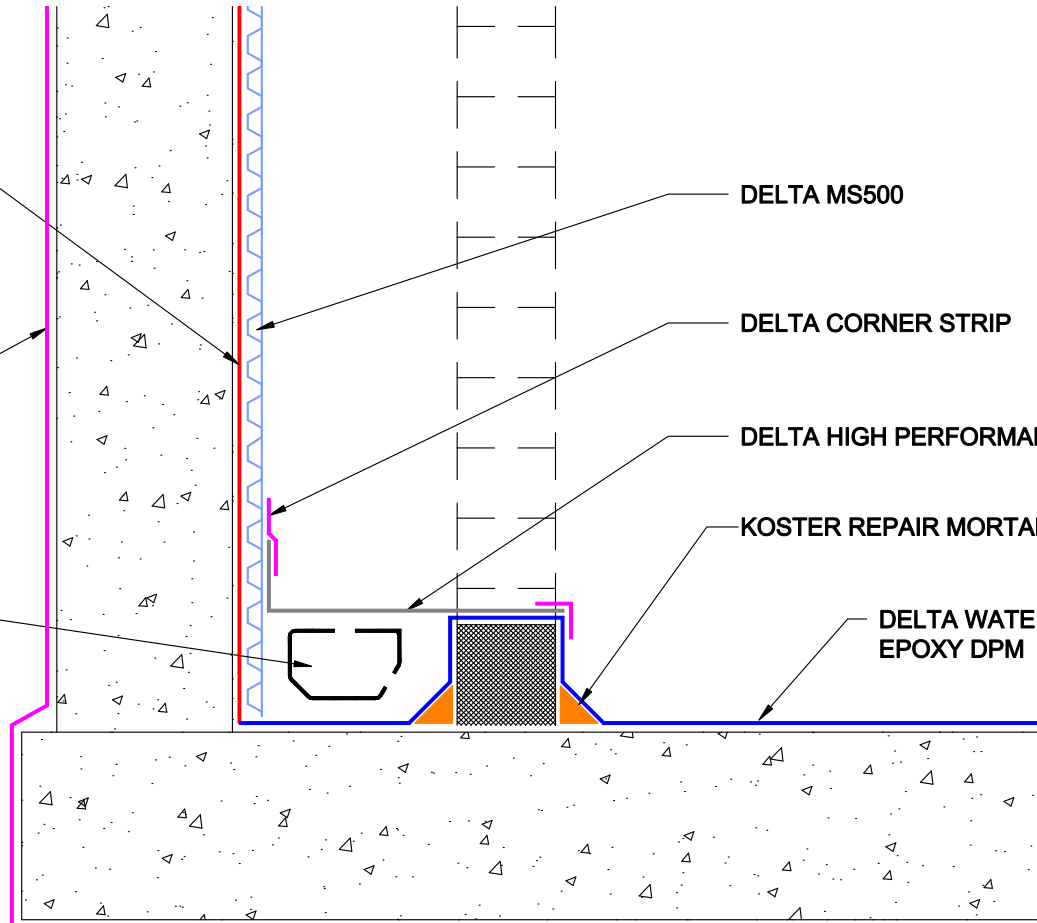
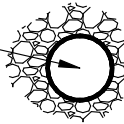


KOSTER POLYSIL TG500
(ANTI LIME COATING)

DELTA GEO DRAIN
QUATTRO
(DRAINAGE + PROTECTION)

**DELTA CHANNEL
TO SUITABLE
DISCHARGE POINT

DELTA AQUADUCT
LAND DRAIN



DELTA MS500

DELTA CORNER STRIP

DELTA HIGH PERFORMANCE DPC

KOSTER REPAIR MORTAR PLUS

DELTA WATER BASED
EPOXY DPM

****DELTA CHANNEL TO INCORPORATE FLUSHING POINTS
TO EITHER END FOR MAINTENANCE**

DELTA MEMBRANE SYSTEMS LTD.

DRAWING No: DW-210-1- (D)

DRAWING TITLE: COMBINED SYSTEM - INTERNAL BUNDED CHANNEL

DELTA HOUSE, MERLIN WAY, NORTH WEALD, EPPING, ESSEX CM16 6HR
TEL: 01992 523523 FAX: 01992 523250

OFFICE USE:

REVISION No:

1

REVISION DATE:

June 2017

Drawn By:

Checked By:

Scale:

System Files: PDF / DWG

DRAWING NOTE:

This drawing is for illustrative purposes only. Drawing not to scale.

PROJECT / COMMENTS:

DRAWING NOTES:

All installations to be carried out in strict accordance with manufacturer's installations instructions.
For further assistance contact Delta Technical on 01992 523 523 or email technical@deltamembranes.com