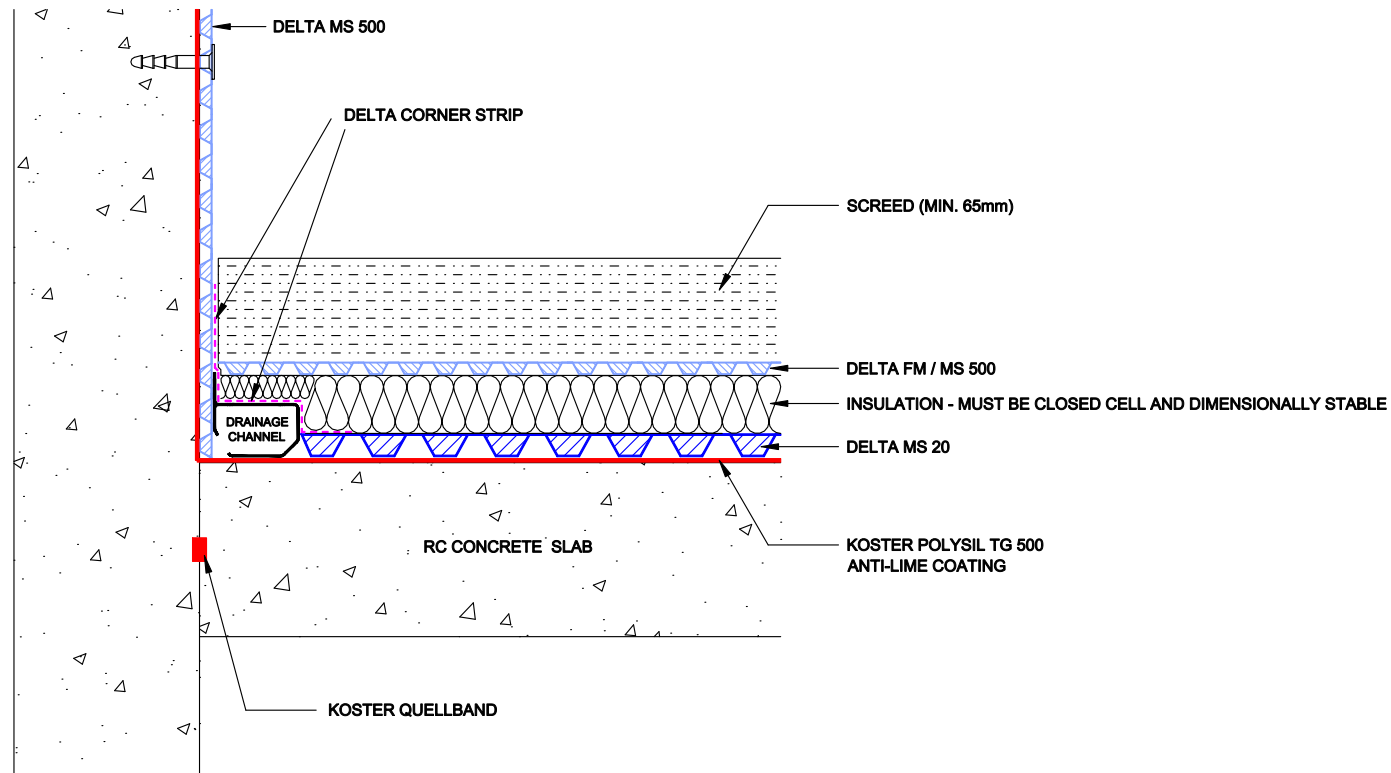


**DRAINED PROTECTION WALL AND FLOOR APPLICATION
- WITH DRAINAGE CHANNEL ON SLAB**



ACCESS / FLUSHING POINTS MUST BE INCLUDED FOR MAINTANNANCE WITHIN THE DELTA CHANNEL
 - CHANGE OF DIRECTION
 - EVERY 6 - 8M ON STRAIGHT RUNS

DELTA MEMBRANE SYSTEMS LTD.

DRAWING No: DW-217-1- (C)
 DRAWING TITLE: DELTA CAVITY DRAIN - CHANNEL ON SLAB

DELTA HOUSE, MERLIN WAY, NORTH WEALD, EPPING, ESSEX CM16 6HR
 TEL: 01992 523523 FAX: 01992 523250

OFFICE USE:
 REVISION No: 1
 Drawn By:
 Checked By:
 Scale:
 System Files: PDF / DWG
 REVISION DATE: June 2017

DRAWING NOTE:
 This drawing is for illustrative purposes only. Drawing not to scale.

PROJECT / COMMENTS:

DRAWING NOTES:
 All installations to be carried out in strict accordance with manufacturer's installations instructions.
 For further assistance contact Delta Technical on 01992 523 523 or email technical@deltamembranes.com