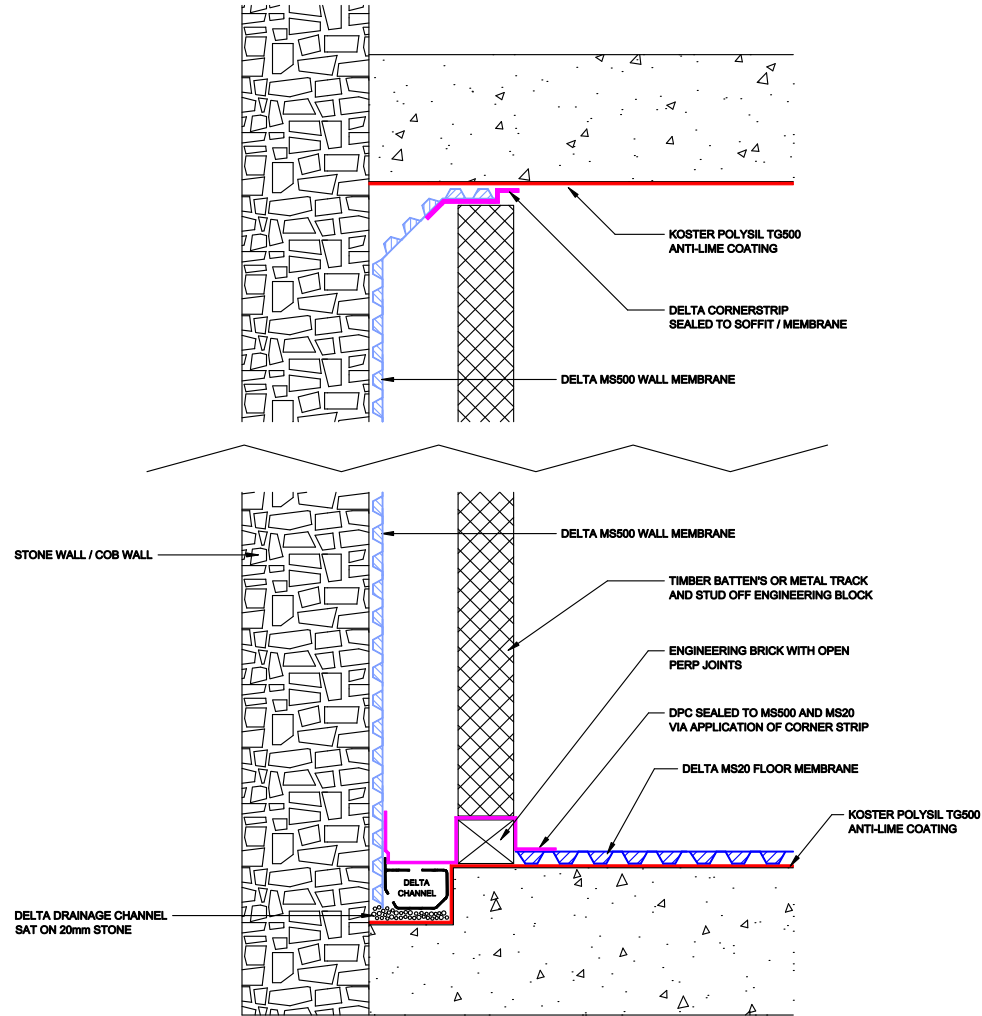


WATERPROOFING CONTINUITY - RECESSED CHANNEL



DELTA MEMBRANE SYSTEMS LTD.

DRAWING No: DW-249-1- (C)

DRAWING TITLE: WATERPROOFING CONTINUITY - RECESSED CHANNEL

DELTA HOUSE, MERLIN WAY, NORTH WEALD, EPPING, ESSEX CM16 6HR
 TEL: 01992 523523 FAX: 01992 523250

OFFICE USE:

REVISION No:
1

REVISION DATE:
Sept 2017

Drawn By:

Checked By:

Scale:

System Files: PDF / DWG

DRAWING NOTE:

This drawing is for illustrative purposes only. Drawing not to scale.

PROJECT / COMMENTS:

DRAWING NOTES:
 All installations to be carried out in strict accordance with manufacturer's installations instructions.
 For further assistance contact Delta Technical on 01992 523 523 or email technical@deltamembranes.com