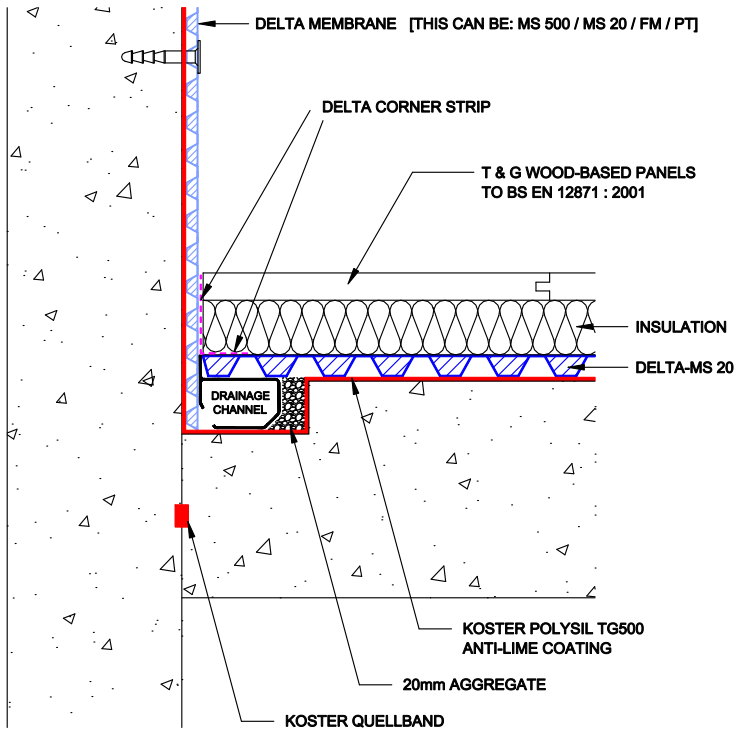


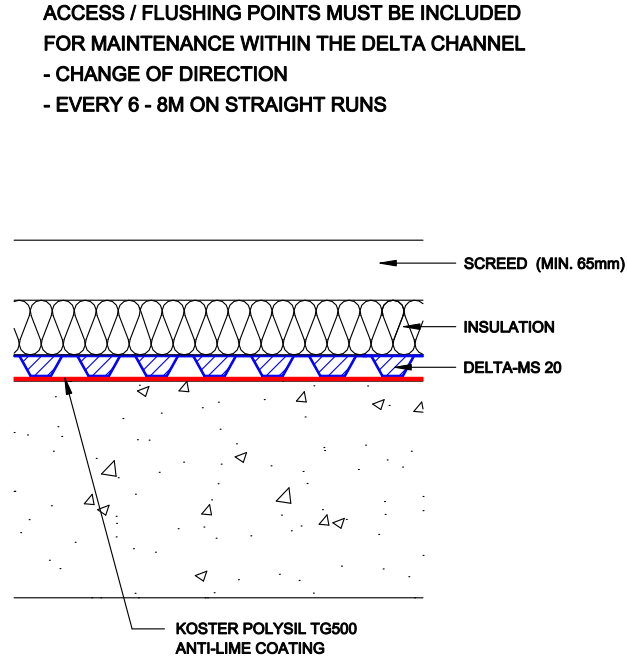
OPTION 1

DRAINED PROTECTION WALL AND FLOOR APPLICATION
- WITH RECESSED CHANNEL,
INSULATION + T & G FLOOR PANELS



OPTION 2

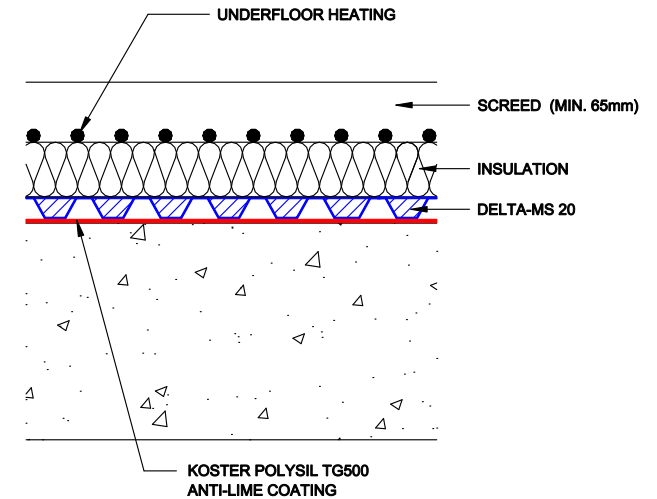
DRAINED PROTECTION WALL AND FLOOR APPLICATION
- WITH RECESSED CHANNEL,
INSULATION + SCREED



ACCESS / FLUSHING POINTS MUST BE INCLUDED
FOR MAINTENANCE WITHIN THE DELTA CHANNEL
- CHANGE OF DIRECTION
- EVERY 6 - 8M ON STRAIGHT RUNS

OPTION 3

DRAINED PROTECTION WALL AND FLOOR APPLICATION
- WITH RECESSED CHANNEL, INSULATION,
SCREED + UNDERFLOOR HEATING



DELTA MEMBRANE SYSTEMS LTD.

DRAWING No: DW-257-1- (C)

DRAWING TITLE: DELTA CAVITY DRAIN - RECESSED CHANNEL + FLOOR BUILD UP OPTIONS

DELTA HOUSE, MERLIN WAY, NORTH WEALD, EPPING, ESSEX CM16 6HR
TEL: 01992 523523 FAX: 01992 523250

OFFICE USE:

REVISION No:
1

REVISION DATE:
December 2017

Drawn By:

Checked By:

Scale:

System Files: PDF / DWG

DRAWING NOTE:

This drawing is for illustrative purposes only. Drawing not to scale.

PROJECT / COMMENTS:

DRAWING NOTES:

All installations to be carried out in strict accordance with manufacturer's installations instructions.
For further assistance contact Delta Technical on 01992 523 523 or email technical@deltamembranes.com