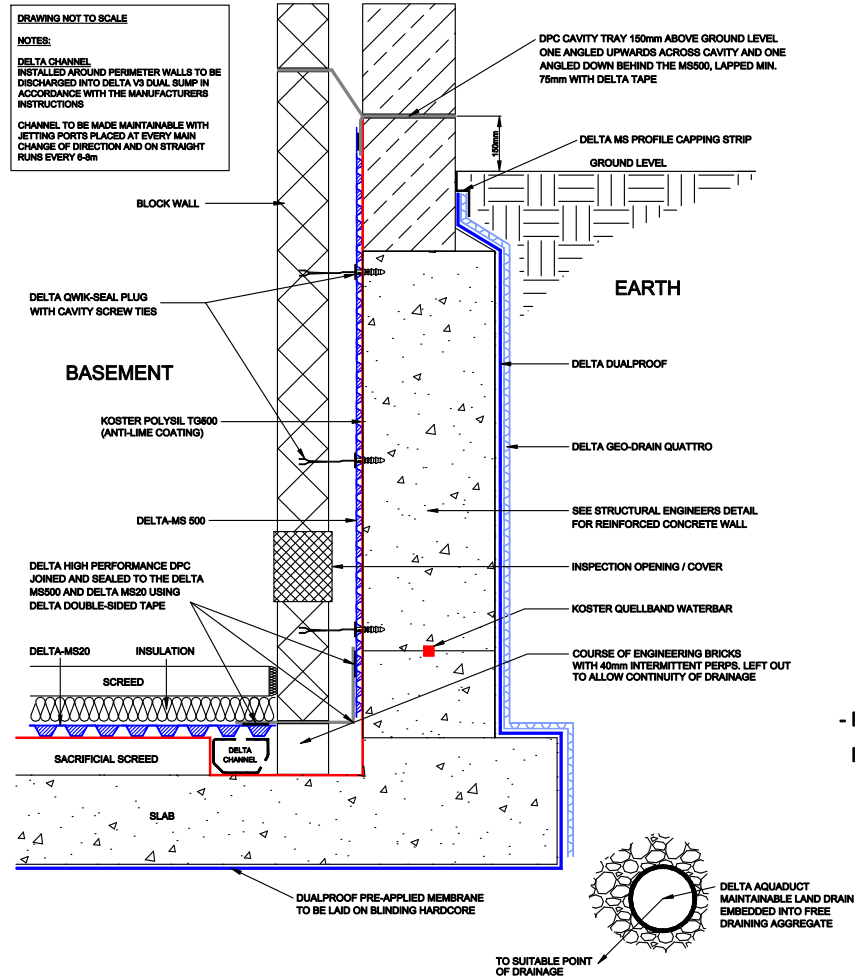


## COMBINED SYSTEM - (SACRIFICIAL SREED OPTION)



- REFER TO DW-263-1-(E)  
FOR JOINT DETAIL

# DELTA MEMBRANE SYSTEMS LTD.

DRAWING No: DW-260-1-(D)  
DRAWING TITLE: DUAL SYSTEM - DUAL PROOF AND SACRIFICIAL SREED CAVITY DRAINAGE MEMBRANE

DELTA HOUSE, MERLIN WAY, NORTH WEALD, EPPING, ESSEX CM16 6HR  
TEL: 01992 523523 FAX: 01992 523250

OFFICE USE:  
REVISION No: 1  
Drawn By:  
Checked By:  
Scale:  
REVISION DATE: November 2017  
System Files: PDF / DWG

DRAWING NOTE:  
This drawing is for illustrative purposes only. Drawing not to scale.

PROJECT / COMMENTS:

DRAWING NOTES:  
All installations to be carried out in strict accordance with manufacturer's installations instructions.  
For further assistance contact Delta Technical on 01992 523 523 or email technical@deltamembranes.com