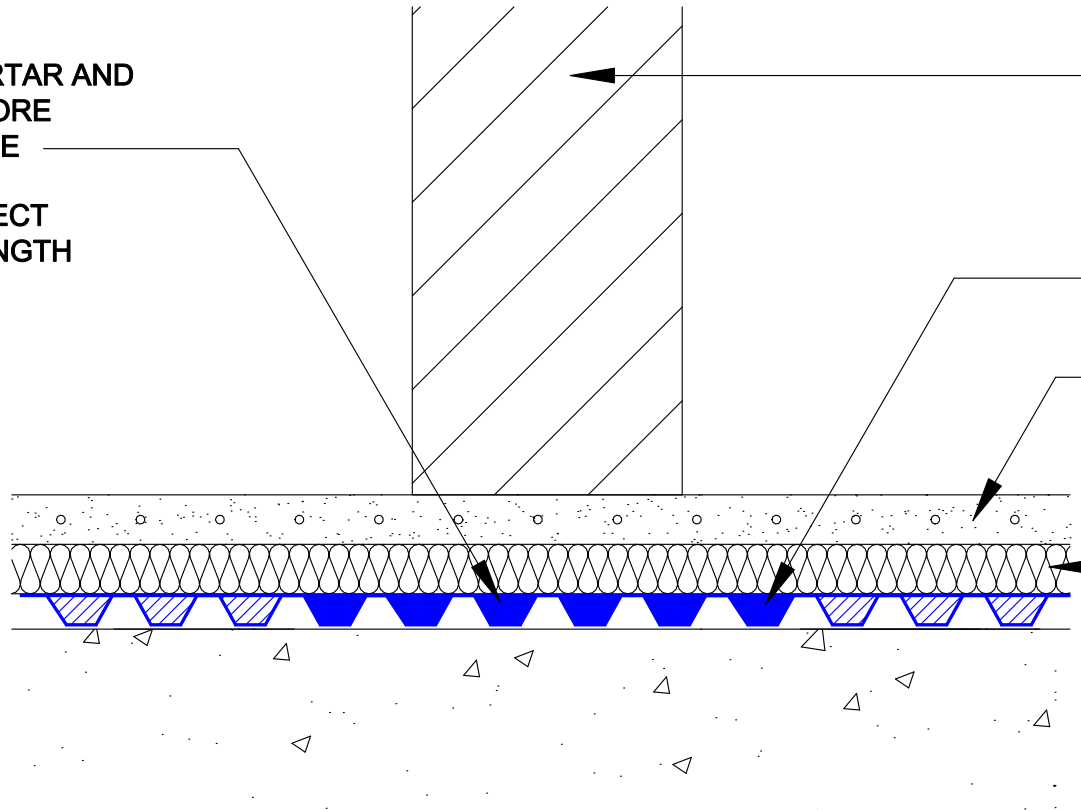


NEW INTERNAL PARTITION / TIMBER STUD WALL DETAIL

LIGHTWEIGHT NON LOAD BEARING WALL

STUDS FILLED WITH MORTAR AND ALLOWED TO CURE BEFORE BUILDING OFF MEMBRANE
 (CAN BE LEFT OUT SUBJECT TO COMPRESSIVE STRENGTH OF INSULATION)



TIMBER WALL / STUD PARTITION BUILD OFF SCREED. FIXED WITH GRIP-FIX OR NO MORE NAILS (SO NOT TO PUNCTURE SCREED)

DELTA MS 20

UNDERFLOOR HEATING IN SCREED

INSULATION (TYPE AND THICKNESS TBC)

DELTA

MEMBRANE SYSTEMS LTD.

DRAWING No: DW-279-1- (C)

DRAWING TITLE: NEW INTERNAL PARTITION / TIMBER STUD WALL DETAIL - LIGHTWEIGHT NON LOAD BEARING WALL

DELTA HOUSE, MERLIN WAY, NORTH WEALD, EPPING, ESSEX CM16 6HR
 TEL: 01992 523523 FAX: 01992 523250

OFFICE USE:

REVISION No:
1

REVISION DATE:
June 2018

Drawn By:

Checked By:

Scale:

System Files: PDF / DWG

DRAWING NOTE:

This drawing is for illustrative purposes only. Drawing not to scale.

PROJECT / COMMENTS:

DRAWING NOTES:
 All installations to be carried out in strict accordance with manufacturer's installations instructions.
 For further assistance contact Delta Technical on 01992 523 523 or email technical@deltamembranes.com