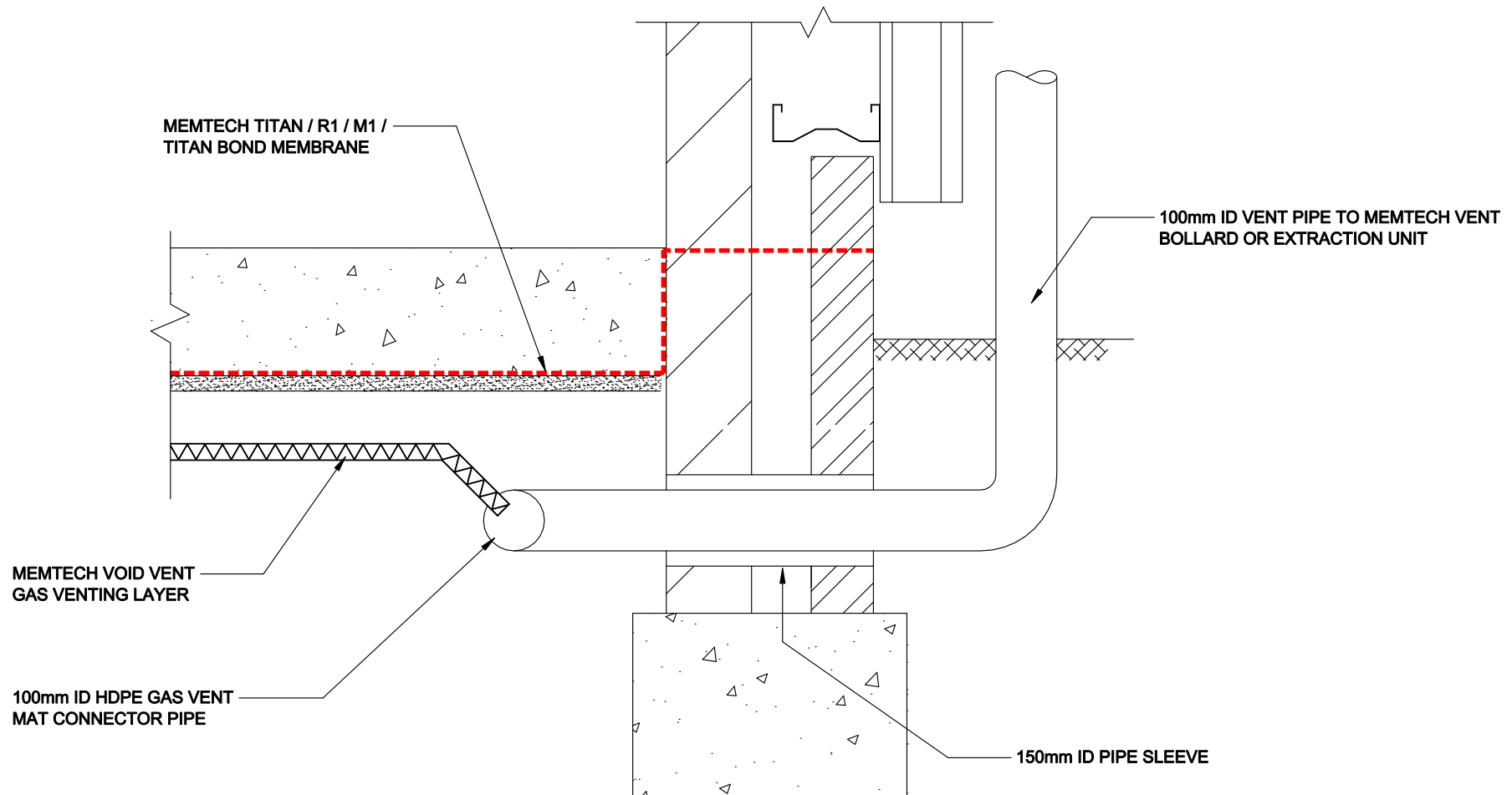


# TYPICAL PERIMETER SECTION 1



DRAWING No: DGS-322-1  
 DRAWING TITLE: MEMTECH - TYPICAL PERIMETER SECTION 1

DELTA HOUSE, MERLIN WAY, NORTH WEALD, EPPING, ESSEX CM16 6HR  
 TEL: 01992 523523 FAX: 01992 523250

OFFICE USE:

REVISION No: 1  
 Drawn By:  
 Checked By:  
 Scale:  
 System Files: PDF / DWG  
 REVISION DATE: April 2018

DRAWING NOTE:  
 This drawing is for illustrative purposes only. Drawing not to scale.

PROJECT / COMMENTS:

DRAWING NOTES:  
 Memtech Titan provides both a waterproof membrane and Hydrocarbon and VOC barrier in accordance with BS 8102 (2009) and BS 8485: 2015