

# Delta Membranes

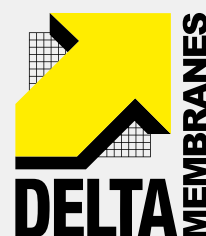
## Delta AT 800

Cutting-edge Type C Drainage Membrane that meets BS 8102:2022 and BS 8485:2015+A1:2019 Standards. Achieve superior Waterproofing and Ground Gas Protection in one application!



**Discover peace of mind today**

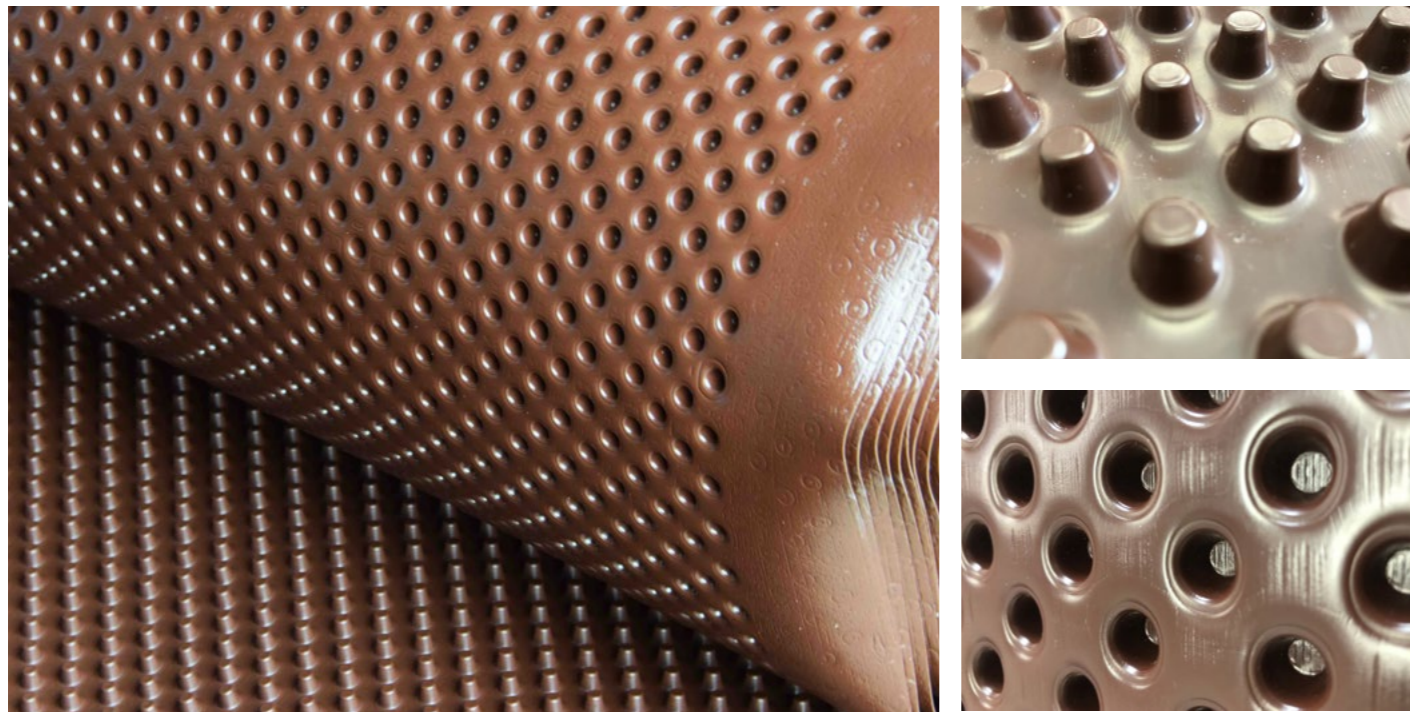
Call 01992 523 523 or email [info@deltamembranes.com](mailto:info@deltamembranes.com) for details



## AT 800 the Revolutionary Membrane

Delta AT 800 provides maximum protection with one application. Designed to offer drainage protection in Type C waterproofing in accordance with BS 8102:2022 this innovative membrane also offers barrier protection to ground gases Carbon Dioxide, Radon and Methane in accordance with BS 8485:2015+A1:2019, Table 7 with high adhesion to the application of flame retardants.

The Virgin Polymer profiled membrane features a 9mm studded profile, creating a substantial 7.9 litre per square meter void. It is suitable for Type C waterproofing solutions in line with BS 8102:2022 standards, providing protection for below-ground structures against groundwater ingress and isolating damp walls above ground level.

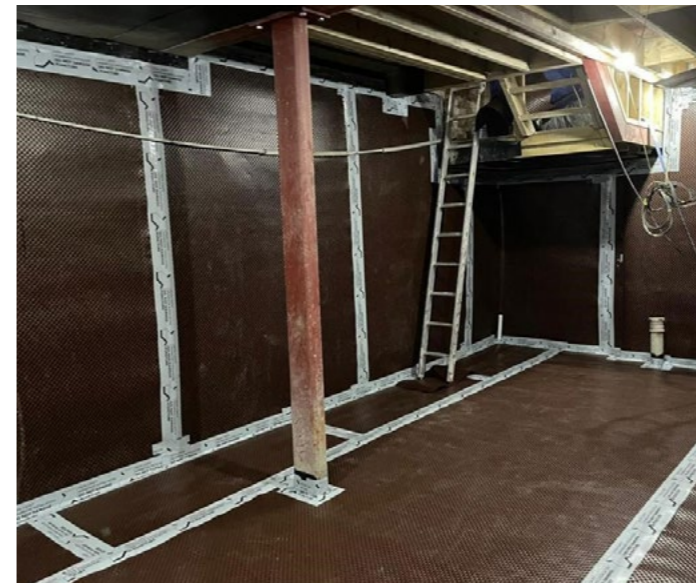


## Fields of Application

Protecting buildings and occupants from harmful ground gases and water ingress is crucial, especially for below-ground structures. These structures are at higher risk due to their direct contact with soil. Proper waterproofing helps prevent flooding, damp, and structural damage, while ground gas protection ensures safety. The right solution involves following UK guidelines: BS 8102:2022 for waterproofing and BS 8485:2015+A1:2019 for ground gas protection.

Looking for a way to keep ground gas and water out of your project? Delta AT 800 is your answer! Trust our expert technical team! With unmatched knowledge, experience, and qualifications, we're always ready to help you succeed.

Choose Delta AT 800 protection for peace of mind!



## Uses:

- Multi-storey underground constructions
- Type C Waterproofing solution for below ground and earth-retaining structures
- May be used in many diverse applications, where structures require protection against groundwater and contaminants
- Basements
- Retaining Walls
- Cellars, garages, tavern, technical rooms, underground rooms in general
- Tunnels, underpasses, and similar infrastructures

## Reliable solutions for Safety, Durability, and Compliance

Get the ultimate protection with Delta's AT 800! This all-in-one membrane offers superior waterproofing and ground gas protection for your project. Simplify your construction project with this high-quality, convenient solution.

Delta's AT 800 membrane is easy to install, suitable for both new and retrofit walls and floors. Highly durable and perfect for any project.

Delta leads in solutions for below ground structures, offering advanced protection systems developed through extensive research. Due to increased awareness of ground gas risks, more construction projects now require suitable protection systems to ensure safety.

## Applications

- Compatible with all types of construction
- Rapid cost-effective installation
- Ideal for complex substructures
- Suitable for new and existing structures
- Suitable for ground gas protection
- Creates a continuous air gap in substrates
- An effect barrier to the transmission of salts, liquid water and water vapour
- An effective barrier to gas – including Methane, CO2 and Radon

## Features – Delta AT 800

### Impermeability

Protect your structure with Delta AT 800! This membrane is a continuous, impermeable barrier that blocks harmful gases and moisture.

### Dual Functionality

Trust Delta AT 800 to protect your space from gas and moisture. Get unbeatable safety and peace of mind. Choose Delta AT 800 and relax, knowing you're covered! Delta AT 800 acts as a damp proof membrane, gas barrier and Type C waterproofing membrane effectively shielding against gas and moisture.

### Robust and Durable

Constructed from robust materials designed to endure site conditions, Delta AT 800 is durable for 100 years in natural soil with  $4 \leq \text{pH} \leq 9$  and soil temperature  $\leq 25^\circ\text{C}$ .

### Chemical Resistant

Delta AT 800 provides excellent resistance to hazardous chemicals, making it a safe and reliable choice of membrane.

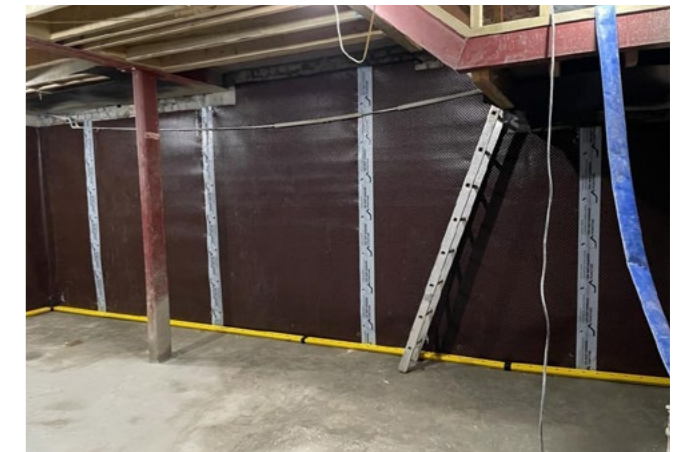
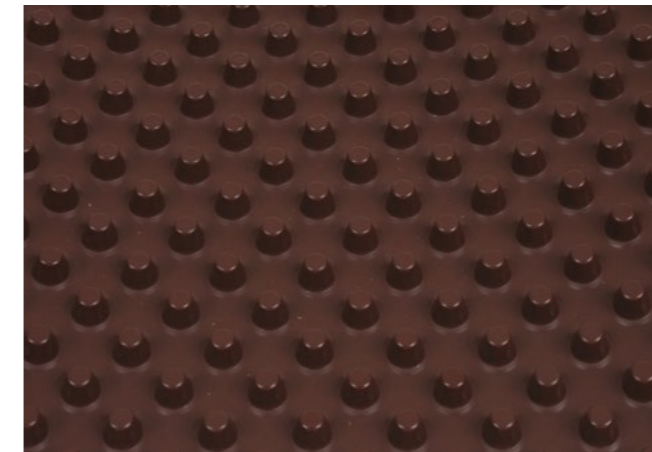
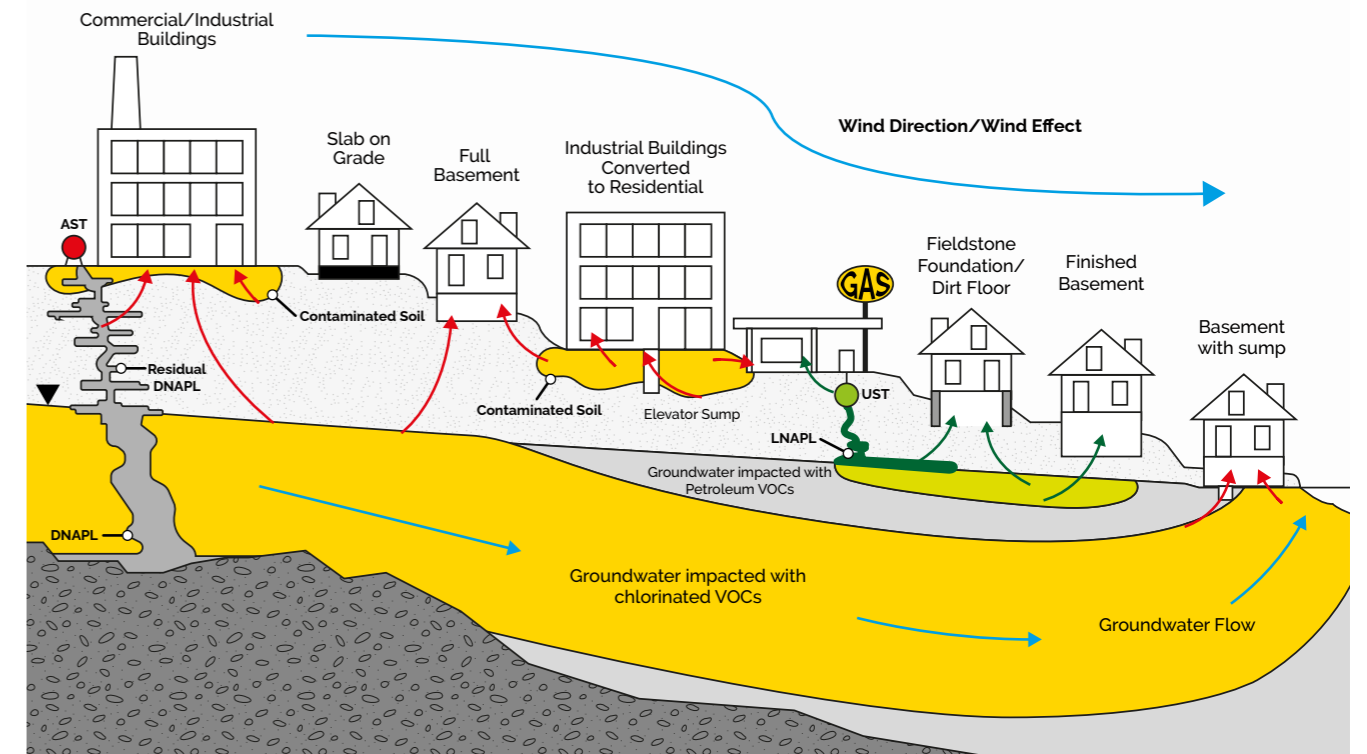
### Compatibility

Delta AT 800, perfectly compatible with Delta's Gas Tape 50 and Gas Over Tape 150. Maximise efficiency and performance with this unbeatable combo!

### High Compressive Strength

High compressive strength, essential for below ground structures. Ensuring lasting durability and stability.

## Source, Pathway, Receptor



## Delta AT 800 – Benefits

Delta AT 800 offers businesses and consumers multiple benefits, including convenience, cost savings, and enhanced value. It reduces the need for separate products in waterproofing and ground gas protection projects, leading to significant savings and improved time efficiency.

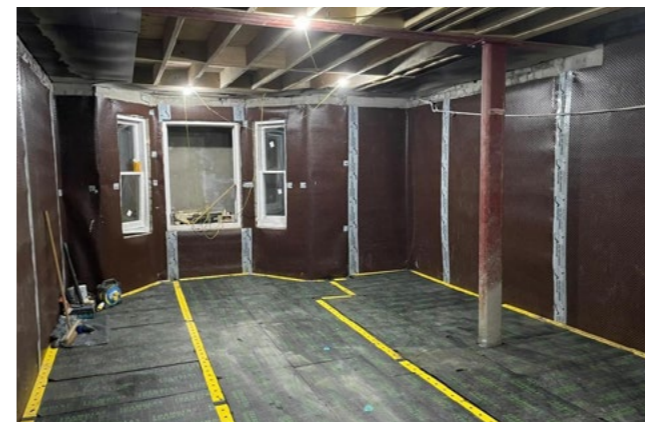
A structural waterproofing membrane can take the form of an external Type A barrier protection membrane which prevents or restricts the passage of groundwater into the structure, or an internal Type C drained protection membrane which is designed to manage and direct water ingress to a safe system of maintainable drainage, should seepage through the structure occur. These distinct membrane systems can be designed and installed to protect the structure, the occupants, and internal environment, also helping to prolong the lifetime of the building and prevent deterioration.

Gas protection membranes are advanced barriers designed to prevent harmful ground gases, such as radon, methane, and carbon dioxide, as well as moisture from infiltrating buildings. Their key features include impermeability, high chemical resistance, exceptional strength and durability, and flexibility for installation. These membranes are crucial for safeguarding properties and occupant health, particularly in contaminated sites.

Ground gas protection involves identifying the source, pathway, and receptor, with the goal of disrupting this connection to ensure safety.

## Benefits

- Rapid cost-effective installation
- 9mm studded profile
- Air volume between studs: 7.9 l/s m<sup>2</sup>
- An effective barrier to gas – including Methane, CO<sub>2</sub> and Radon
- Table 7, BS 8485:2015+A1:2019 Code of practice for the design of protective measures for methane and carbon dioxide ground gases for new buildings
- BS 8102:2022 Type C Waterproofing Protection
- Compatible with all types of construction
- Ideal for complex substructures
- Guaranteed performance
- Suitable for new and existing buildings
- Suitable for high volumes of water penetration
- Suitable for ground gas protection
- A reversible system, which will minimise damage to historical or heritage structures
- An effective barrier to the transmission of salts, liquid water and water vapour



**HEAD OFFICE**

Delta House, Merlin Way, North Weald, Epping, Essex, CM16 6HR  
01992 523 523 | [info@deltamembranes.com](mailto:info@deltamembranes.com) | [www.deltamembranes.com](http://www.deltamembranes.com)