

Delta Membrane Systems Ltd  
Delta Channel

[www.deltamembranes.com](http://www.deltamembranes.com)

Delta Channel is a component part used within the Type C Cavity Drainage System. Delta Channel is a distinctive yellow, PVC drainage conduit designed to manage water ingress. Delta Channel is bedded into a preformed rebate at the vulnerable floor/wall junction and is suited for use in conjunction with Delta's Cavity Drain membrane range.

Water enters the Channel via preformed holes and is diverted into a suitable drainage point, either mechanical (sump pump/package pump station such as a Delta Dual V3 System) or natural (gravity fed). Delta Channel is particularly suited as a component within the Type C Cavity Drainage System as water ingress through a structures walls, floors or curved soffits is controlled behind the membranes and diverted into the Delta Channel.



## DELTA CHANNEL WITH UPSTAND

Delta Perimeter Drainage Channel is a component part used within a Type C Cavity Drainage System. Delta Channel is a distinctive yellow, PVC drainage conduit designed to manage water ingress and hydrostatic water pressure in basements and below ground structures. Channel with upstand keeps the channel stable when abutting the Delta membrane on a perimeter wall.

DMS 207



## DELTA CHANNEL WITHOUT UPSTAND

Delta Perimeter Drainage Channel is a component part used within a Type C Cavity Drainage System. Delta Channel is a distinctive yellow, PVC drainage conduit designed to manage water ingress and hydrostatic water pressure in basements and below ground structures. Channel without upstand is used where cross channels sit over construction joints in the middle of the floor, when Delta Channel is to be offset from the wall or to join two perimeter channels together across a floor.

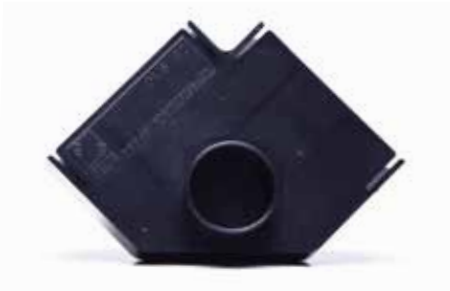
DMS 208



## STRAIGHT CONNECTORS

Straight connectors for connecting Delta channel (with or without upstand). Also known as Delta "in line". The range of Delta drainage channel ancillary components make installation more efficient and quicker.

**DMS 310**



## CORNER PIECES

Delta "90 degree" Corner Connector with "Push Out" feature for inspection port. Can be used to join lengths of Delta channel on both internal and external corner sections.

**DMS 182**



## T PIECES

T Pieces, also known as "Tee Connectors", facilitates crossing 3 channels together to dissect the floor or to discharge to a centrally located sump pump. The T Pieces include a "Push Out" feature for inspection port to service the system.

**DMS 183**



## END CAPS

End Caps have a dual role and can work as either a blanking plate (at the far end of a channel run) or can be converted easily (with their "Push Out" feature) for easy fit of drainage pipe outlet (connector) to join with the sump pump station.

**DMS 184**



## 110MM DRAINAGE OUTLET

110mm Drainage Outlet is designed to join the channel to 110mm standard underground pipe. The 110mm Drainage Outlet consists of a 90° PVC bend and a PVC male coupling which is fitted to the base of Delta Channel to allow water to travel from the conduit to the water collection point (sump pump). The 110mm Drainage Outlet can also accept an inspection port and has the ability cross floor channels.

**DMS 128**



## MS 20 FLUSHING / ACCESS PORT

The MS20 access port enables the 20mm cavity to be inspected and flushed through should the need arise, thus making the whole cavity drain system maintainable and further reducing the risks in the long term.

**DMS 124**



## INSPECTION PORT (JETTING EYE)

Inspection Ports are designed for use with perimeter drainage channel (with or without upstand DMS 207/DMS 208). Inspection ports allow for maintenance and future cleaning/flushing of the drainage system (with a suitable anti-lime solution (if required)).

**DMS 094**



## ACCESS PORT UNIT

Preformed unit of Delta perimeter drainage channel with inspection port. Used to provide cleaning, inspection, and maintenance access to the Delta drainage channel system.

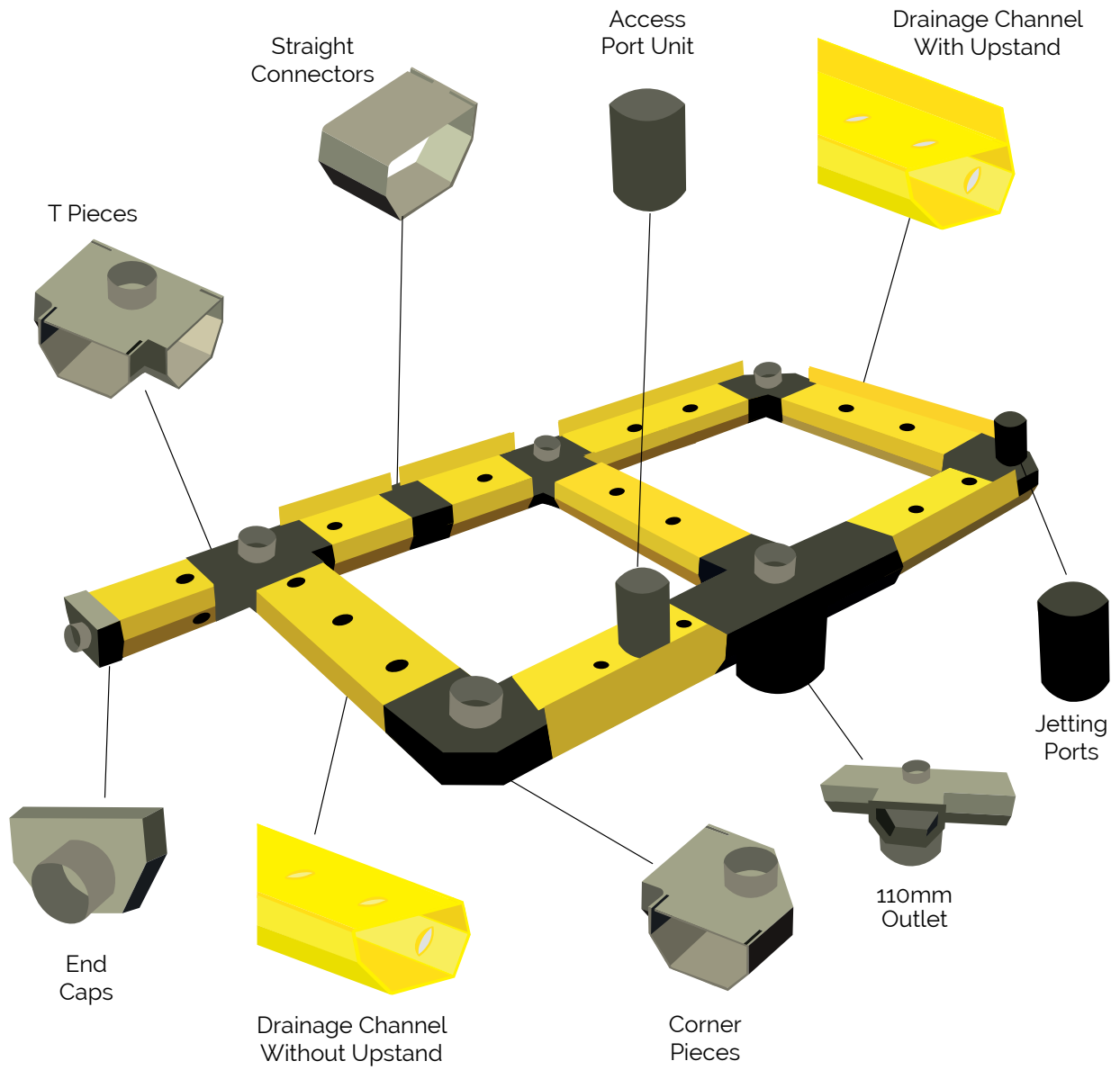
**DMS 117**



## DRAINAGE CONNECTOR

Drainage Connector (outlet) is used for connection underneath/underside of Delta perimeter drainage channel, ideal for continuous waterproofing at level changes. Connects to 40mm pipe enabling drainage channel connection from below.

**DMS 118**



## TECHNICAL DRAWING

Typical use of the Delta Drainage Channel

