

PRODUCT DATA SHEET

HIGH PERFORMANCE DPC

Product Code: DMS300-DMS306



Delta High Performance DPC is a high performance polymeric material designed to suit all applications.

Whether as a dpc at ground level, or for use as a fully designed cavity tray system, Delta DPC is designed to withstand the heaviest of loadings and is fully compatible with all materials it is likely to come into contact with during the normal course of construction and satisfies all the requirements as laid down by current British Standards.

info@deltamembranes.com

www.deltamembranes.com

01992 523 523



BENEFITS

- High Performance Polymeric Material
- Suitable for use as a DPC in all types of building construction
- Can be used in vertical, horizontal, stepped and cavity tray application
- Available in various thicknesses
- Excellent tear resistance under high compressive loads
- Low permeability to Radon
- Both faces feature a non-slip profile to ensure optimum mortar adhesion
- Bitumen-compatible, rot-proof and UV-stabilized
- Highly flexible even at low temperatures, so that no cracks will occur in the material



SPECIFICATION

- F30 Accessories/sundry items for brick/block/stone walling 360
- GAS RESISTANT DPCS/ CAVITY TRAYS
- BS6515:1984 Specification for polyethylene damp-proof courses for masonry



ASSOCIATED PRODUCTS

- MemTech Gas Barrier
- Delta MS Membrane
- Delta Gas Barrier

PRODUCT DATA SHEET

HIGH PERFORMANCE DPC

Product Code: DMS300-DMS348

TECHNICAL DATA

Product Code	DMS 300 100mm x 20m
	DMS 301 150mm x 20m
	DMS 302 225mm x 20m
	DMS 303 300mm x 20m
	DMS 304 450mm x 20m
	DMS 305 600mm x 20m
	DMS 348 1000mm x 20m

Tensile Strength	BS 2782 m320a (100mm/min) MD-12.9N/mm ² /TD - 11.2N/mm ²
------------------	---

Elongation at Break:	BS 2782 m320a (100mm/min) MD-415%/TD-582%
----------------------	--

Tear Strength:	BBA Method (Superseeds BS 2782 m260b:1980) MD-122N/mm ² /TD - 96N/mm ²
----------------	--

Water Absorption:	BS 2782 M430A (after 7 days) 0.22%
-------------------	---------------------------------------

Water Vapour Transmission	BS 3177 (75% RH 25°C) 733MNsg ⁻¹
---------------------------	--

Low Temperature Flexibility	BS 2782 M150B MOAT 27; 5.4.2 -25°C
-----------------------------	---------------------------------------

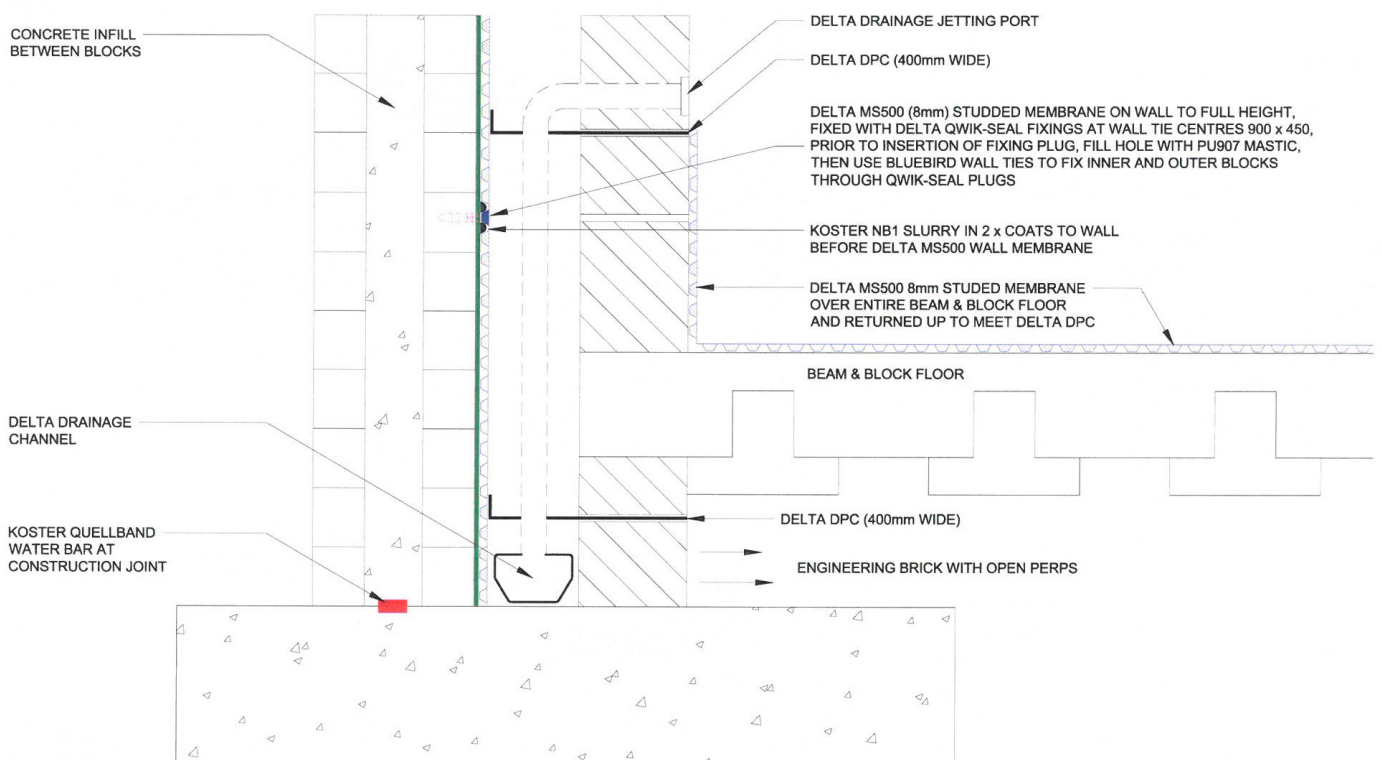
PRODUCT DATA SHEET

HIGH PERFORMANCE DPC

Product Code: DMS300-DMS306

TECHNICAL DRAWING

DPC Bespoke Detail



Head Office:

Delta House, Merlin Way, North Weald, Epping, Essex, CM16 6HR
01992 523 523 | info@deltamembranes.com | www.deltamembranes.com

DMSDPS2019