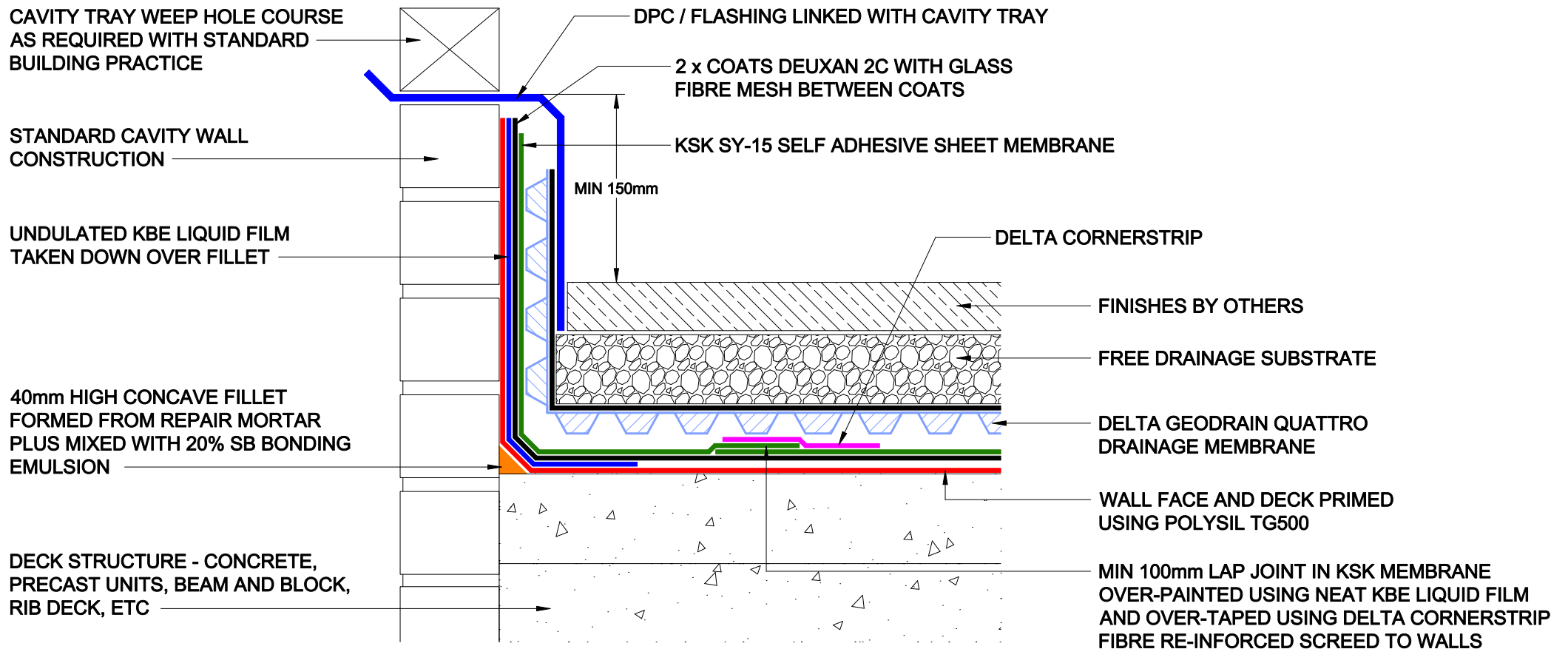


DECK WATERPROOFING DETAIL, COMBINED DEUXAN 2C / KSK SY-15 SOLUTION



DELTA MEMBRANE SYSTEMS LTD.

DRAWING No: DW-527-1- (D)
 DRAWING TITLE: DECK WATERPROOFING DETAIL
 COMBINED DEUXAN 2C / KSK SY-15 SOLUTION

DELTA HOUSE, MERLIN WAY, NORTH WEALD, EPPING, ESSEX CM16 6HR
 TEL: 01992 523523 FAX: 01992 523250

OFFICE USE:
 REVISION No: 1
 Drawn By:
 Checked By:
 Scale:
 System Files: PDF / DWG
 REVISION DATE: Sept 2019

DRAWING NOTE:
 This drawing is for illustrative purposes only. Drawing not to scale.

PROJECT / COMMENTS:

DRAWING NOTES:
 All installations to be carried out in strict accordance with manufacturer's installations instructions.
 For further assistance contact Delta Technical on 01992 523 523 or email technical@deltamembranes.com