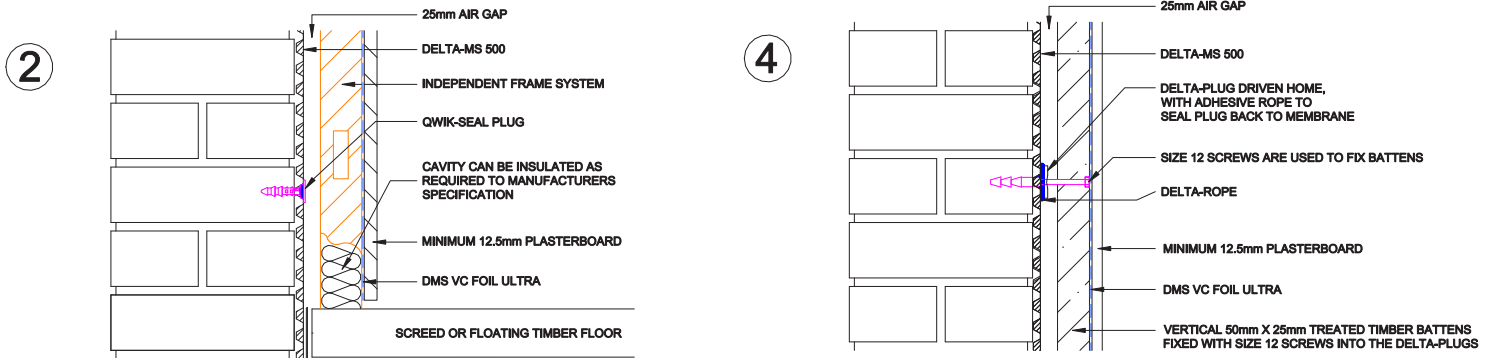


U-Value Calculation: 100mm PIR



Element type: Basement Wall – Delta Membranes

Calculation Method: BS EN ISO 6946

Drawing Reference: DW-506-1

U-Value Calculation: 100mm PIR

Layer	d (mm)	layer	bridge	Fraction	R layer	R bridge	Description
					0.130		Rsi
1	12.5	0.210			0.060		Plasterboard
2							Protect VC Foil Ultra
3	100	0.022	0.120	0.150	4.545	0.833	PIR insulation / timber studs
4	25	R-value	0.120	0.150	0.440	0.208	25mm cavity low-E (0.2)
5	0.6	R-value			0.120		Delta MS-500
6	220	0.770			0.286		Solid brickwork
					0.040		Rse
<u>358 mm (total wall thickness)</u>					<u>5.621</u>		

Total resistance: Upper limit: 4.155 Lower limit: 3.737 Ratio: 1.112 Average: 3.946 m²K/W

U-value (uncorrected) 0.253

U-value corrections

Air gaps in layer 3 U = 0.007 (Level 1)

Total U 0.007

U-value (corrected) 0.260

U-value (rounded) 0.26 W/m²K