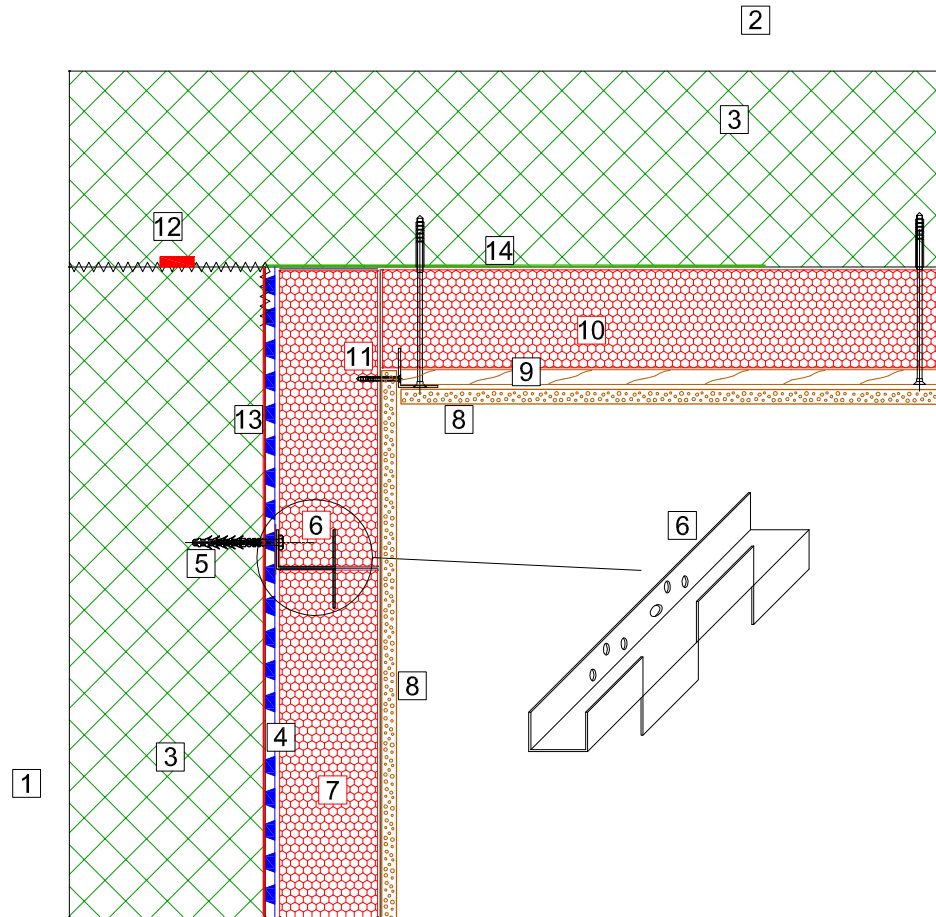


# DELTA MEMBRANE SYSTEMS

## BASEMENT WALL-SOFFIT JUNCTION WITH DELTA GLASS



1. Wall
2. Soffit
3. Reinforced concrete
4. Delta-MS500 drainage membrane
5. Delta plug+Delta rope OR Delta Qwik-Seal plugs
6. Delta Glass F anchor fixed using size 12 screws
7. DELTA GLASS T4+ (minimum 70mm) with joints sealed with PC@56 bituminous adhesive
8. Moisture resistant tapered edges plaster board / Eternit Hydropanel/ Fermacell - Apply three strips of PC@56 adhesive using 10 mm notched trowel
9. Timber battens or metal angle mechanically fixed
10. DELTA GLASS W+F (150mm) joints sealed with PC@56 adhesive applied with 10mm notched trowel
11. 3No 100x100mm slotted head restraint brackets/panel or slotted continuous "L" shaped angle mechanically fixed
12. NB1 Grey Slurry with Water Bar
13. Koster Polysil TG500 Anti-Lime Coating
14. Koster NB1 - Min. 1M to soffit / 300mm to wall

# DELTA MEMBRANE SYSTEMS LTD.

DRAWING No: DWF-142-2- (C)

DRAWING TITLE: DELTA GLASS / CAVITY DRAIN - WALL SOFFIT DETAIL

DELTA HOUSE, MERLIN WAY, NORTH WEALD, EPPING, ESSEX CM16 6HR

TEL: 01992 523523 FAX: 01992 523250

OFFICE USE:

REVISION No:

2

REVISION DATE:

October 2019

Drawn By:

Checked By:

Scale:

System Files: PDF / DWG

DRAWING NOTE:

This drawing is for illustrative purposes only. Drawing not to scale.

PROJECT / COMMENTS:

DRAWING NOTES:

All installations to be carried out in strict accordance with manufacturer's installations instructions.  
For further assistance contact Delta Technical on 01992 523 523 or email [technical@deltamembranes.com](mailto:technical@deltamembranes.com)