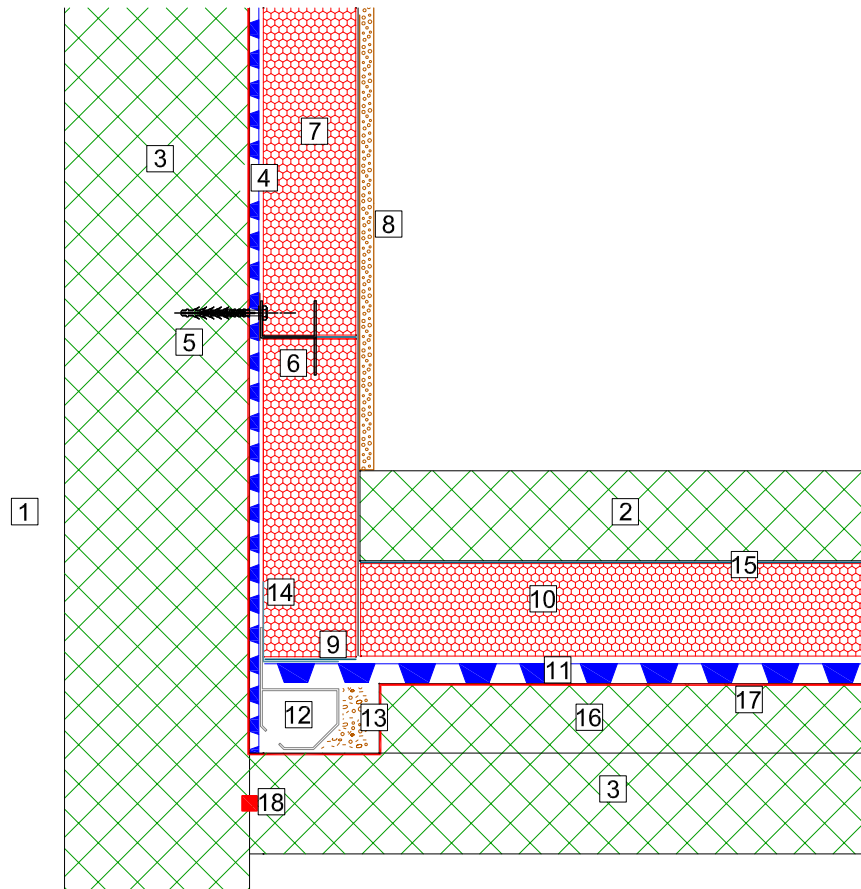


# DELTA MEMBRANE SYSTEMS

## DELTA CHANNEL ON SLAB WITH DELTA GLASS AND SACRIFICIAL SCREED

Delta Channel must have Access / Setting points for maintenance

- Change of direction
- Every 6 - 8M on straight runs



1. Wall
2. Screed
3. Reinforced concrete BS EN 1992
4. Delta-MS500 drainage membrane
5. Delta-Plug+Delta Rope seal or Qwik-Seal Plug
6. Delta Glass F anchor screwed into Delta fixing
7. DELTA GLASS T4+ (minimum 70mm) with joints sealed with PC@56 bituminous adhesive
8. Moisture resistant tapered edges plaster board / Eternit Hydropanel/ Fermacell - Apply three strips of PC@56 adhesive using 10 mm notched trowel
9. Bed insulation in PC@56 adhesive
10. DELTA GLASS FLOOR BOARD
11. Delta-MS20 drainage membrane
12. DELTA Drainage channel
13. 20mm aggregate
14. Delta corner strip
15. 1000 gauge Polyethelene separation membrane
16. Sacrificial screed forms perimeter chase for drainage channel
17. Koster Polysil TG500 Anti-Lime Coating
18. Koster Quellband

# DELTA MEMBRANE SYSTEMS LTD.

DRAWING No: DWF-143-2- (C)

DRAWING TITLE: DELTA GLASS / CAVITY DRAIN - CHANNEL / SCREED

DELTA HOUSE, MERLIN WAY, NORTH WEALD, EPPING, ESSEX CM16 6HR  
 TEL: 01992 523523 FAX: 01992 523250

OFFICE USE:

REVISION No: 2  
 Drawn By:  
 Checked By:

REVISION DATE: October 2019  
 Scale:  
 System Files: PDF / DWG

DRAWING NOTE:

This drawing is for illustrative purposes only. Drawing not to scale.

PROJECT / COMMENTS:

DRAWING NOTES: All installations to be carried out in strict accordance with manufacturer's installations instructions. For further assistance contact Delta Technical on 01992 523 523 or email [technical@deltamembranes.com](mailto:technical@deltamembranes.com)