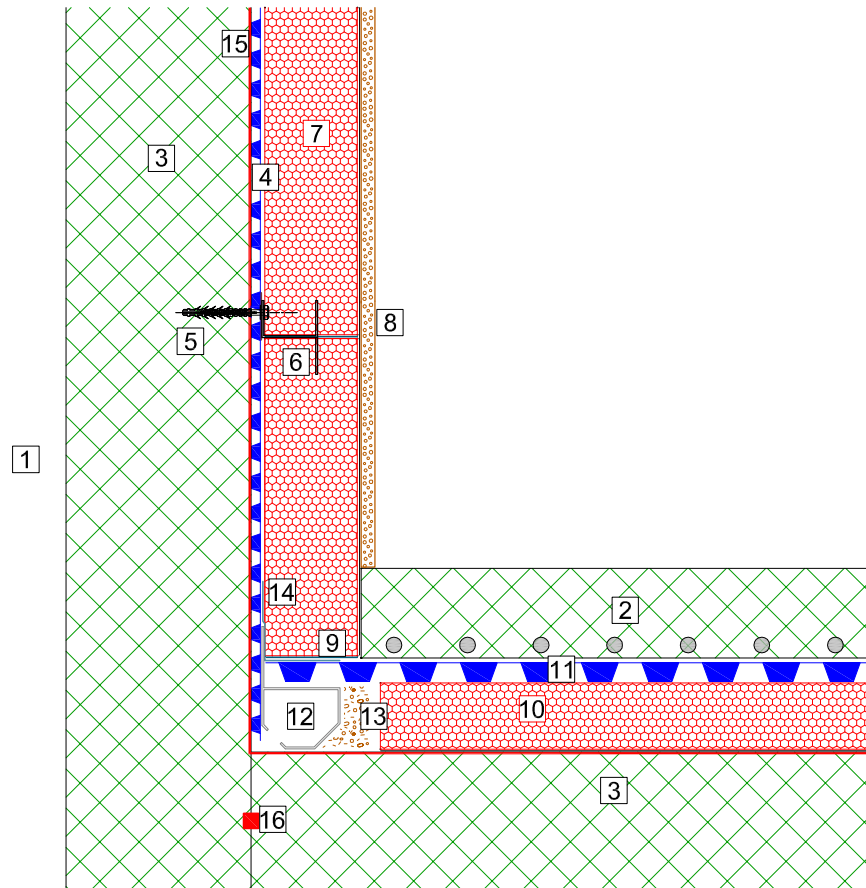


# DELTA MEMBRANE SYSTEMS

## DELTA CHANNEL ON SLAB WITH DELTA GLASS

Delta Channel must have Access / Setting points for maintenance

- Change of direction
- Every 6 - 8M on straight runs



1. Wall
2. Screed
3. Reinforced concrete
4. Delta-MS500 drainage membrane
5. Delta-Plug+Delta-Rope seal or Qwik-Seal Plug fixes system and takes F anchor brackets
6. Delta Glass F anchor fixed into DELTA plugs
7. DELTA GLASS T4+ (minimum 70mm) with joints sealed with PC@56 bituminous adhesive
8. Moisture resistant tapered edges plaster board / Eternit Hydropanel/ Fermacell - Apply three strips of PC@56 adhesive using 10 mm notched trowel
9. Bed insulation in PC@56 adhesive
10. DELTA GLASS FLOOR BOARD fully bonded and joints sealed with PC@58 bituminous adhesive
11. Delta-MS20 drainage membrane
12. Delta Drainage channel
13. 20mm aggregate
14. Delta corner strip
15. Koster Polysil TG500 Anti-Lime Coating
16. Koster Quellband

# DELTA MEMBRANE SYSTEMS LTD.

DRAWING No: DWF-144-2-(C)

DRAWING TITLE: DELTA GLASS / CAVITY DRAIN - CHANNEL ON SLAB

DELTA HOUSE, MERLIN WAY, NORTH WEALD, EPPING, ESSEX CM16 6HR  
 TEL: 01992 523523 FAX: 01992 523250

OFFICE USE:

REVISION No: 2  
 Drawn By:  
 Checked By:

REVISION DATE: October 2019  
 Scale:  
 System Files: PDF / DWG

DRAWING NOTE:

This drawing is for illustrative purposes only. Drawing not to scale.

PROJECT / COMMENTS:

DRAWING NOTES: All installations to be carried out in strict accordance with manufacturer's installations instructions. For further assistance contact Delta Technical on 01992 523 523 or email [technical@deltamembranes.com](mailto:technical@deltamembranes.com)