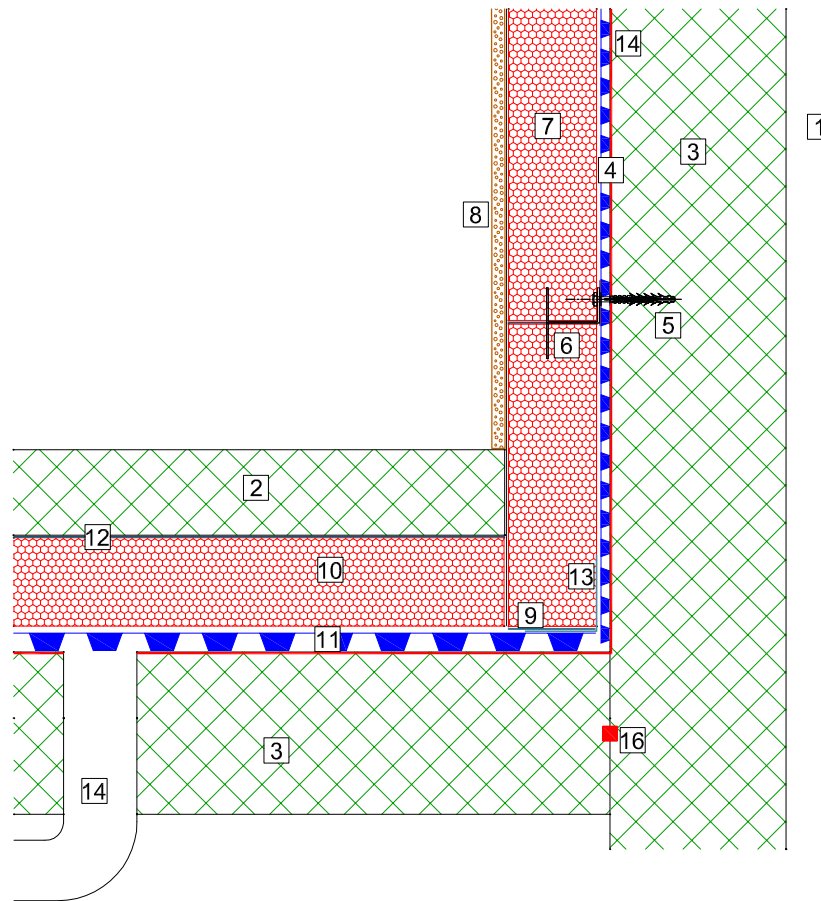


DELTA MEMBRANE SYSTEMS
 DELTA GLASS OVER DELTA MS AND DETAIL 129



1. Wall
2. Screed
3. Reinforced concrete
4. Delta-MS500 drainage membrane
5. Delta-Plug+Delta-Rope OR Delta Qwik-Seal plug
6. Delta Glass F anchor screwed into Delta plugs
7. DELTA GLASS T4+ (minimum 70mm) with joints sealed with PC@56 bituminous adhesive
8. Moisture resistant tapered edges plaster board / Eternit Hydropanel/ Fermacell - Apply three strips of PC@56 adhesive using 10 mm notched trowel
9. Bed insulation in PC@56 adhesive
10. DELTA GLASS FLOOR BOARD
11. Delta-MS20 drainage membrane
12. 1000 gauge Polyethelene separation membrane
13. Delta corner strip
14. Delta detail 129-V3
15. Koster Polysil TG500 Anti-Lime Coating
16. Koster Quellband

DELTA MEMBRANE SYSTEMS LTD.

DRAWING No: DWF-145-2- (C)

DRAWING TITLE: DELTA GLASS / CAVITY DRAIN - MODULAR DRAINAGE

DELTA HOUSE, MERLIN WAY, NORTH WEALD, EPPING, ESSEX CM16 6HR

TEL: 01992 523523 FAX: 01992 523250

OFFICE USE:

REVISION No:

2

REVISION DATE:

October 2019

Drawn By:

Checked By:

Scale:

System Files: PDF / DWG

DRAWING NOTE:

This drawing is for illustrative purposes only. Drawing not to scale.

PROJECT / COMMENTS:

DRAWING NOTES:

All installations to be carried out in strict accordance with manufacturer's installations instructions.
 For further assistance contact Delta Technical on 01992 523 523 or email technical@deltamembranes.com