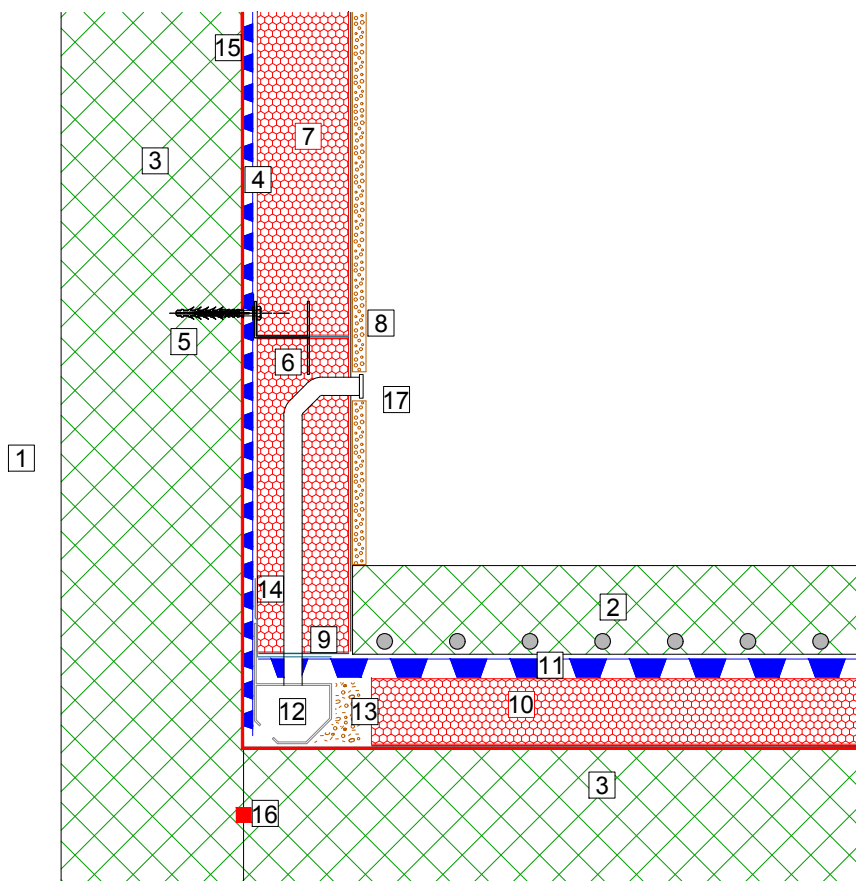


DELTA MEMBRANE SYSTEMS DELTA CHANNEL ON SLAB WITH DELTA GLASS

Delta Channel must have Access /
Setting points for maintenance
- Change of direction
- Every 6 - 8M on straight runs



1. Wall
2. Screed
3. Reinforced concrete
4. Delta-MS500 drainage membrane
5. Delta-Plug+Delta-Rope seal or Qwik-Seal Plug
fixes system and takes F anchor brackets
6. Delta Glass F anchor fixed into DELTA plugs
7. DELTA GLASS T4+ (minimum 70mm) with joints
sealed with PC@56 bituminous adhesive
8. Moisture resistant tapered edges plaster board /
Eternit Hydropanel/ Fermacell - Apply three strips
of PC@56 adhesive using 10 mm notched trowel
9. Bed insulation in PC@56 adhesive
10. DELTA GLASS FLOOR BOARD fully bonded and
joints sealed with PC@58 bituminous adhesive
11. Delta-MS20 drainage membrane
12. Delta Drainage channel
13. 20mm aggregate
14. Delta corner strip
15. Koster Polysil TG500 Anti-Lime Coating
16. Koster Quellband
17. Access Port

DELTA MEMBRANE SYSTEMS LTD.

DRAWING No: DWF-147-2-(C)

DRAWING TITLE: DELTA GLASS / CAVITY DRAIN - CHANNEL ON SLAB
- WITH ACCESS PORT

DELTA HOUSE, MERLIN WAY, NORTH WEALD, EPPING, ESSEX CM16 6HR
TEL: 01992 523523 FAX: 01992 523250

OFFICE USE:

REVISION No:
2

REVISION DATE:
October 2019

Drawn By:
Checked By:
Scale:
System Files: PDF / DWG

DRAWING NOTE:

This drawing is for
illustrative purposes
only. Drawing not to
scale.

PROJECT / COMMENTS:

DRAWING NOTES:
All installations to be carried out in strict accordance with manufacturer's
installations instructions.
For further assistance contact Delta Technical on 01992 523 523 or email
technical@deltamembranes.com