



Description

Delta Amphibia WT Panel is a hydro-expansive EPDM-based waterstop designed to prevent water from leaking from or into concrete structures by swelling when in contact with water and creating an impenetrable barrier.

Delta Amphibia WT Panel can be used in conjunction with Delta Amphibia WT Expansion (a hydro-expansive waterstop) to seal contraction/control and expansion joint(s) including deteriorated, in any reinforced concrete structure.

On contact with water, Delta Amphibia WT Panel hydrates, and swells to double its initial volume, offering a Hydrophilic seal to a joint. If the presence of water is not constant, Delta Amphibia WT Panel remains permanently expanded.

Delta Amphibia WT Panel is flexible, offering conformability to intricate details.

Features

- Conformable can be installed onto a variety of irregular substrates
- Simple overlap jointing on site
- Can be easily joined to Delta Amphibia WT Expansion waterstop for expansion/contraction/control joints
- Reliable solution that can be hot melt coupled or bonded to increase overall thickness
- Simple and straightforward application
- Not hindered by humidity during application

Specification

- BS 8102:2022 Protection of below ground structures against water ingress. Code of practice.
- NBS J40 / 130 – Flexible Sheet Tanking / waterproofing
- NBS E40/320 Hydrophilic waterstops

Product Details

DMS 1047 – Delta Amphibia WT Panel 1200mm x 250mm

Technical Data

Specifications	Values
Dimension	120x25cm
Thickness	5mm
Surface Area	0.3m ²
Weight	About 1.6 kg circa per panel
Volumetric Expansion (7 days)	200%

The data reported are obtained in the laboratory at +20°C and 60% R.H. (relative humidity).

Fields of Application

- To seal horizontal and vertical construction joints for in-situ concrete structures
- To seal casting of new concrete against existing concrete
- To seal discontinuous elements - floor slabs cast against diaphragm retaining walls, steel sheet piles and secant piled walls
- To seal joints between floor slabs and pile caps
- To seal expansion joints/contraction joints/control joints in combination with Delta Amphibia WT Expansion profile



Associated Products

- Delta Amphibia Membranes
- Delta Amphibia WT Expansion profile
- Delta Amphibia AKTI-VO 201
- Delta Amphibia BI Mastic

Packaging

Supplied in 10 panels. Total length - 12m

Installation

Substrates should be clear of any protrusions and/or cavities.

Protect Delta Amphibia WT Panel from contact with standing water in case of excessive delay of confining with cast concrete.

Applications in combination with Delta Amphibia WT Expansion profiles (see detail FIG.1)

Apply the Delta Amphibia WT Panels along a joint surface using the Delta Amphibia Bi-Mastic adhesive and/or nails with fix washers, join the elements by simply placing the heads next to each other and seal with Delta Amphibia AKTI-VO 201. Create a connection fillet with Delta Amphibia AKTI-VO 201 at the foot of the panels. Proceed with the installation of the profile Delta Amphibia WT Expansion (Please see Delta Amphibia WT Expansion Product Data Sheet for product information).

Applications in technical joints in combination with PVC profiles (see detail FIG. 2)

Apply the Delta Amphibia WT Panels along the joint surface, taking care to place the panel head next to the PVC joint profile, using the Delta Amphibia Bi Mastic adhesive and/or nails with fix washers, join the elements by simply placing the heads next to each other and seal with Delta Amphibia AKTI-VO 201. Create a connection fillet with AKTI-VO 201 at the foot of the panels.

Installation on reinforced concrete slab head against provisional structures (see detail FIG. 3) or on the extrados of horizontal or vertical concrete castings (see detail FIG. 4 and 5)

Install the panels along the slab head or on the extrados on the construction joint, securing them to the support with nails or with Delta Amphibia Bi Mastic, join the items by simply uniting the heads and seal with Delta Amphibia AKTI-VO 201. The thickness of the product can be doubled by applying a double panel, in which case the head joints between the elements must be staggered.

Please refer to Delta's Installation Guides. Installation Guides can be found at www.deltamembranes.com/technical/delta-installation-guides/. We have a number of "How to" subject related video guides available on your Youtube Channel and Website. Please visit www.deltamembranes.com/technical-categories/the-video-suite/

Storage

- Store safely and keep out of reach of children
- Always store and transport in a secure position
- Store in a dry location protected from direct sun light and humidity

Safety

Always follow the instructions provided in the material safety data sheet and take the precaution described there. Wear appropriate Protective Personal Equipment (PPE) when applying and using the material. Observe all governmental, state, and local safety regulations when processing the material.

Adequate training is required before industrial or professional

Technical Drawings

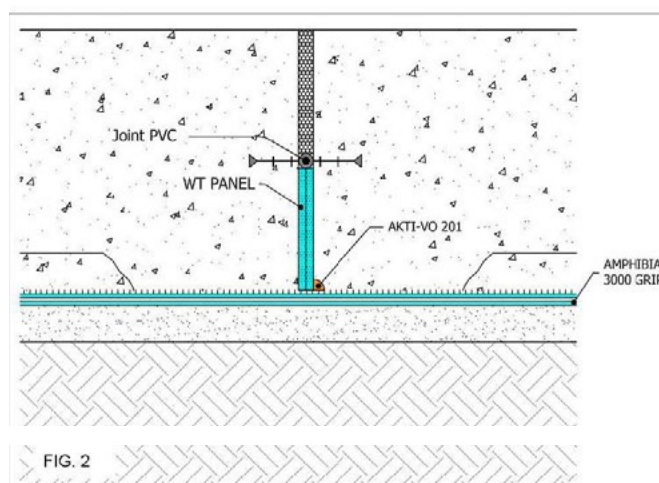
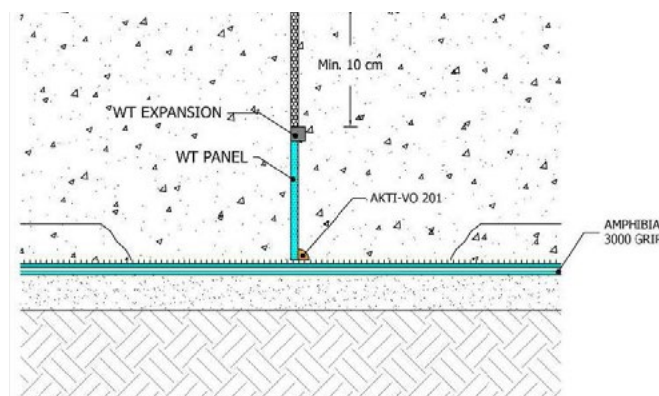


FIG. 2

PRODUCT DATA SHEET

Delta Amphibia WT Panel

Technical Drawings

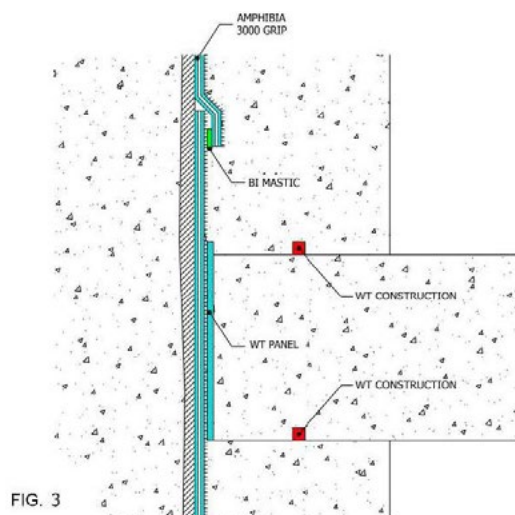


FIG. 3

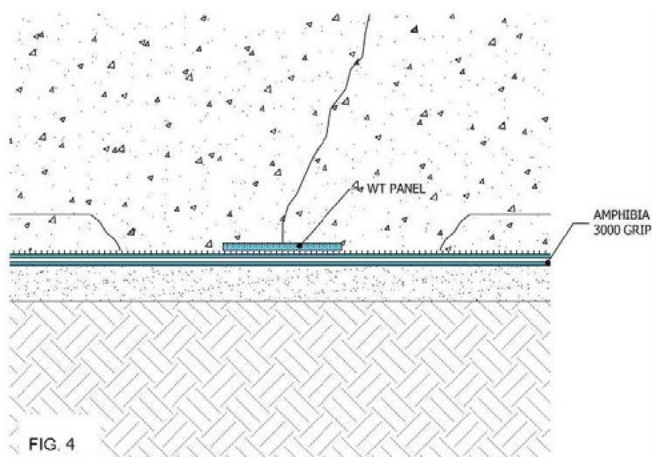


FIG. 4

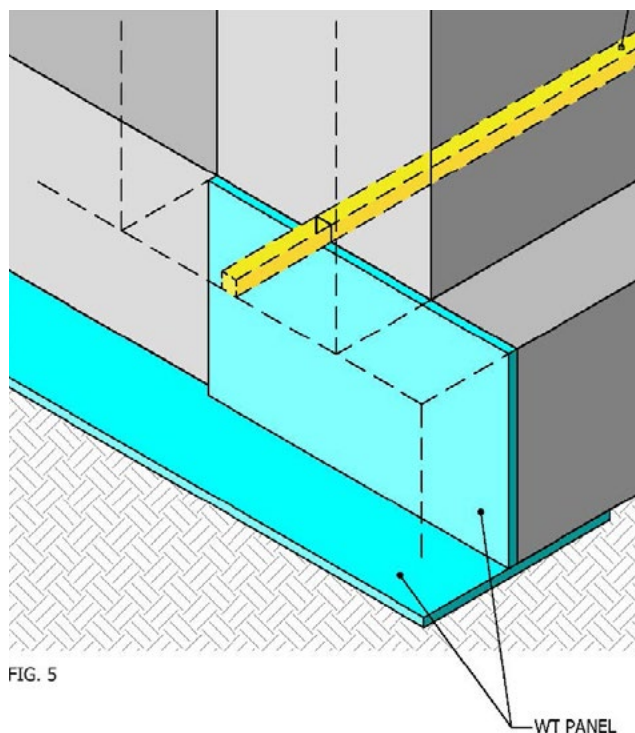


FIG. 5

Other Information

All data and information contained in these Product/Technical Data Sheets is up-to-date and correct as at the date of issue. The information given is suggested as guidance and should only be used for evaluating your specific application. Delta Membrane Systems Limited cannot control or anticipate the conditions under which this product may be used, each user should review the information in specific context of the planned use. The information contained in these Product/Technical Data Sheets should not be considered a warranty, expressed, or implied, including but not limited to a warranty of merchantability or fitness for a particular purpose. In no event shall Delta Membrane Systems Limited be liable for any incidental or consequential damages resulting from the use, misuse, or inability to use the product. This exclusion applies regardless of whether such damages are sought based on breach of warranty, breach of contract, negligence, strict liability in tort, or any other legal theory. When in doubt, contact Delta's Technical Team on 01992 523 523.