

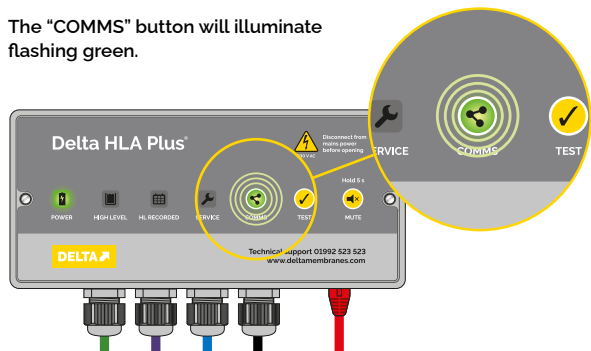
Delta Membrane Systems Limited

Delta HLA Plus - Wi-Fi Set-up

01

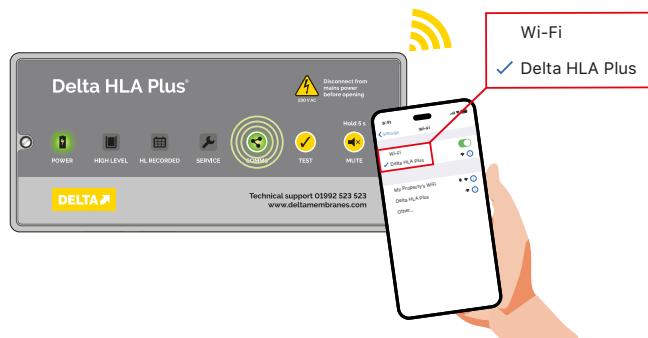
To connect a Delta HLA Plus Device to Wi-Fi network, locate the Access Point in your Delta HLA Plus Device's settings. To achieve this, press and hold the 'COMMS' button for 10 seconds until the "COMMS" button flashes green. It will initially light up red on installation. The red COMMS button indicates that no connection to COMMS has been made.

The "COMMS" button will illuminate flashing green.



02

Begin by positioning yourself near/in front of the Delta HLA Plus Device. Using your smartphone or other Wi-Fi enabled device (such as a laptop or tablet), search for the Delta HLA Plus Wi-Fi Access Point.



03

Once located, connect your smartphone or other Wi-Fi enabled device to the Wi-Fi Access Point "Delta HLA Plus". After establishing a connection, open Safari, or any web browser and type **192.168.4.1** into the address bar.



04

Delta HLA Plus Devices offer flexibility in usage. You have the option to use the devices as standalone high-water level alarm without an internet connection. However, for complete access to all notification and monitoring features, connect your Delta HLA Plus Device to the internet. This can be accomplished either through Wi-Fi or Ethernet, based on your convenience and requirements.



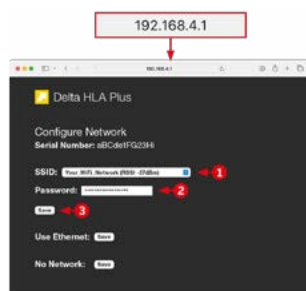
05

For a stable and efficient connection, it's crucial to **only use Wi-Fi when the signal strength at your device's location is consistently high**. This will ensure optimal performance and uninterrupted service. When faced with weaker signals, it would be beneficial to consider the use of Wi-Fi booster. These devices can greatly enhance your internet connection stability and strength, providing a more reliable network.

06

Select your desired Wi-Fi point from the SSID drop-down menu. The signal strength, or RSSI, is displayed alongside the name. Where required enter the password for your chosen Wi-Fi network and click 'Save'. The Delta HLA Plus Device will then reboot and automatically connect to the selected Wi-Fi. The device's 'COMMS' button will illuminate a continuous green light, indicating an active internet connection. If the Delta HLA Plus Device fails to illuminate a continuous green light, please follow these processes again.

The status of the Delta HLA Plus Device is displayed on the Delta Pumps App (once the device has been registered to a user account).



07

Following the reboot, your router will automatically establish an internet connection via DHCP (Dynamic Host Configuration Protocol). You'll know the connection is live when the COMMS button shines a steady green.

Check the device's status on the Delta Pumps App to view connection, battery level, and upcoming service due dates.

