



PumpSecure

Your benefits start here

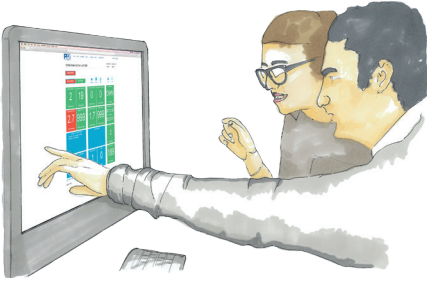
It's more than just Wi-Fi. **It's total peace of mind.**

Precise
Passionate
Service

PPS
packaged**pump**systems

What is PumpSecure?

PumpSecure is a revolutionary new monitoring plan, allowing us to keep an eye on your pump stations in real time and detect if something is going to go wrong before it does. If we detect anything at your property, we'll contact you to get things working as quickly and conveniently as possible - our engineer should even have the correct part to make the repair in one visit.



How does it work?

We'll send one of our engineers to your property to install a Wi-Fi device inside your AlertMaxx2. Once this is installed and connected to your internet, data is wirelessly sent to the PPS Op-Centre. This allows us to constantly monitor your pump station in real time and determine the pump's health and detect breakdowns before they occur.

Why should I get PumpSecure?

Unlike any other product on the market, PumpSecure is completely designed around you. Our team of skilled Op-Centre staff will be monitoring your property 24/7/365. If something happens at your property that we think you need to know about, we'll telephone you and explain what is going to happen next. You can be anywhere in the world knowing PPS have you covered!

IMAGINE YOUR PUMPS ARE LIKE A CAR, ONCE YOU HAVE THEM ON THE 'PUMPSECURE' PLAN, WE WILL SERVICE THEM, PUT OIL IN THEM, REPLACE TYRES AND DEAL WITH MOST ISSUES ALL WITHIN A REGULAR MONTHLY FEE, GIVING YOU WARRANTY FOR LIFE ON THE MOST CRITICAL COMPONENTS OF YOUR BASEMENT!



What's covered?

PumpSecure not only allows us to remotely monitor your pumps, but it also covers all servicing labour, free of charge replacement parts (including pumps and accessories) and we even throw in free call outs and a 24/7/365 helpline.

The PumpSecure plan costs just £62.00 per month (for two pump chambers) on a two-year contract and is covered by a simple monthly direct debit payment.

Our plans



Text Message Alarms & Service Reminder	•	•
Email Alarms & Service Reminder	•	•
24/7/365 Helpline	•	•
24/7/365 Remote Monitoring	-	•
Service Visits Included	-	•
Call Outs / Unplanned Work Included	-	•
Free Replacement Parts	-	•
Lifetime Warranty	-	•

Sign up to PumpSecure & receive a free pump service!

How to activate your plan...

Step 1

Choose your plan and contact one of our Service Representatives on **01279 757400**. Make sure you have your Wi-Fi activation code available found on the front of the AlertMaxx2 (a small white sticker).

Step 2

One of our engineers will visit your property **free of charge** to install a Wi-Fi device into your AlertMaxx2.

Step 3

Sit back and relax. Your plan will be active from the day our engineer attends your property.

"EXCEPTIONAL SERVICE FROM BEGINNING TO END.
THANK YOU!"
DEBORAH H.

"ALL YOUR ENGINEERS WHO HAVE VISITED
OUR ADDRESS HAVE BEEN HIGHLY EFFICIENT,
COURTEOUS AND HELPFUL. AN EXCELLENT
EXAMPLE OF HOW TO RUN A COMPANY."
AVERIL S.

Frequently Asked Questions...

What information do you need from us?

All we will need is your telephone number so we can reach you 24/7 if something critical happens at your home.

How much bandwidth will AlertMaxx2 use?

The data traffic between the AlertMaxx2 and PPS is very small and is non-continuous. It's equivalent to downloading one song every 6 months!

How do you get into our network?

There are two ways to setup the network, our engineer will request the SSID and the password from you or, you can enter the passkey yourself during setup. Your network password is never stored outside your premises.

What happens if we change our network settings?

We recommend you don't, but if you do you will need our Wi-Fi setup guide and a computer or mobile phone.

What happens if we have a power cut on the PumpSecure plan?

If the power cut turns off your router, we will miss the heartbeat from your property. The PumpSecure system will automatically determine the best action to take based on your specific pump station requirements. We might also give you a call on the emergency number you provided us during setup. If the power cut only affects your pumps, we will get a message telling us that your power is down and act accordingly.

Who owns the data collected?

We will own the data collected from your pumps. We will use the data in dialogue with manufacturers and utility companies to enhance the products we supply. Your personal data remains your property and we will never redistribute it without your expressed permission.

[PSPA-B-V2-06.17]

Packaged Pump Systems Ltd.

Unit 12 Haslemere Industrial Estate
Pig Lane
Bishop's Stortford, CM23 3HG

T 01279 757 400
E info@ppsgroupuk.com
W www.ppsgroupuk.com

 **DELTA**
membrane systems



PPS
packagedpumpsystems